

# Omega Elevator

LIFTS MANUFACTURER



Together, we will climb higher



STANDARDIZED PRODUCT FROM 3 TO 53 PEOPLE



**OMEGA ELEVATOR SA** is a manufacturer of both hydraulic and electric traction Lifts based in Vitoria, Spain since 1989. We have a 9000m<sup>2</sup> manufacturing plant with all the technical and design knowledge necessary to complement an international range of elevator products.

Omega is rapidly becoming one of Europe's most successful suppliers of new lift products and modernisation equipment for both elevators and escalators alike.

All of our lift systems undergo stringent testing in our own on site test towers before being put into production so as to meet our own high standards.

Omega manufactures many of the components both mechanical and electrical, as well as, the electronics for the control systems. Also much of the hydraulics is of our own manufacture.

Our annual productive capacity is around 4000 lifts per year featuring modern production processes coupled with a high level of quality control. All of this in producing both commercial and residential lifts at competitive prices with the options of high speed elevators systems offering speeds from 0.15 up to 3 m/s.

Omega's electronics and control systems are able to offer Lifts in up to 10 car groups serving up to 64 floors. We are also able to offer a regenerative system capable of producing energy through the Lifts operation which can then be distributed back into the localised network. This is an important facility when satisfying the requirements of BREAAAM (Building Research Establishment Environmental Assessment Method) which is now becoming a standard requirement for new lifts within the UK and the rest of Europe.

We are also able to provide a system of lift monitoring which constantly monitors the lifts operational status and the amount of traffic the Lift has to deal with.

We offer a very wide range of lift solutions according to market needs with both CE European and UL (ASME A.17) American standards and accreditations being fully complied with,

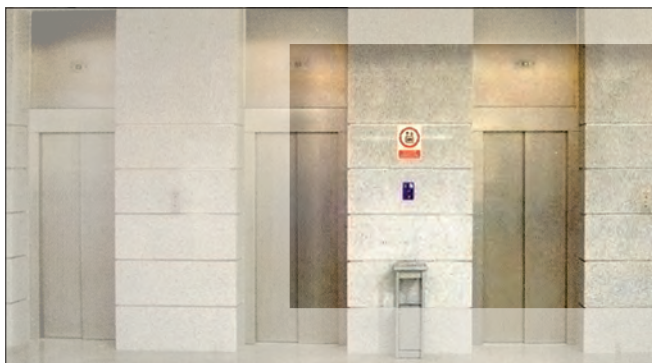
Our range of escalators and elevators can be specially designed to suit your application as can our range of panoramic lifts which can even be of a circular design.

All of this is complemented with the great experience we have in both installation and ongoing maintenance which, when professionally carried out by our own operatives, will see your investment last well into the future.

Our mission is to offer customers full support before, during and after the sale of one of our products.

We have a large technical team working on developing the best possible solutions for lift products in today's global market and it is with this in mind that you can be assured of Omega's commitment to quality and service for the future.

We are sure you will be satisfied with an Omega Elevator.



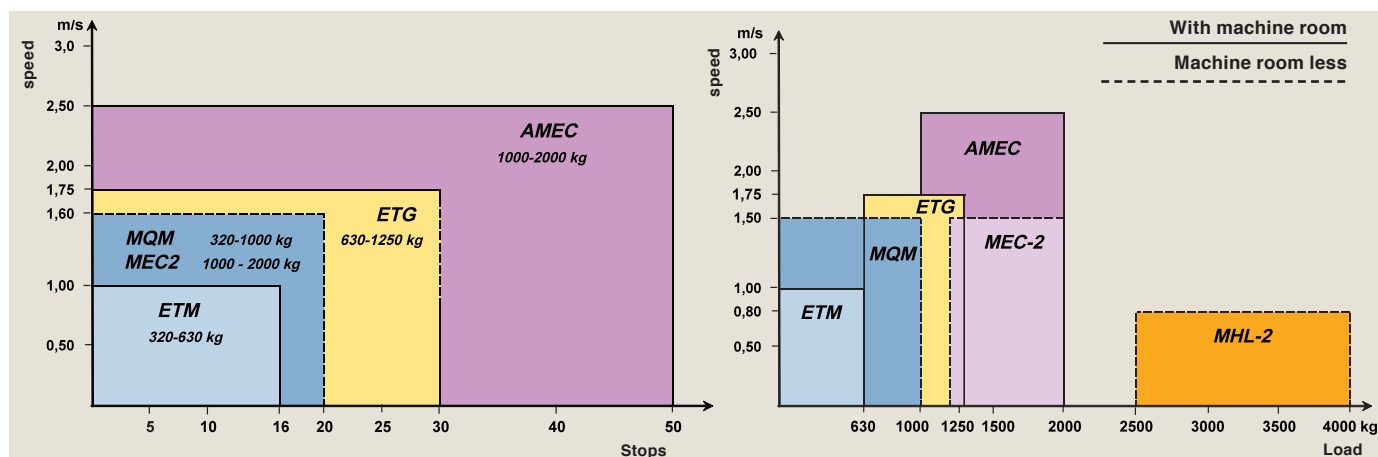


- |                        |   |
|------------------------|---|
| 4 Images               | 23 Dumbwaiters & Small Goods Lifts  |
| 5 Images               | 24 ETM Electric Traction Lift with Machine Room 300 kgs to 630 kgs        |
| 6 Panoramic Lifts      | 25 ETG Electric Traction Lift with Machine Room 630 kgs to 1250 kgs       |
| 7 Pedestrian Doors     | 26 MQM Electric Traction Motor Roomless Lift 320 kgs to 1000 kgs          |
| 8 Car Deigns           | 27 MEC2 - Electric Traction Motor Roomless Lift 1250 kgs to 2000 kgs      |
| 9 ATLANTIC Car         | 28 MHL2 - Electric Traction Motor Roomless Lift 2500 kgs to 4000 kgs      |
| 10 PRESTIGE Car        | 29 AMEC USA Accredited UL. Lift up to 4000 lb                             |
| 11 SKY Car             | 30 HA Hydraulic Lift (with or without Lift Motor Room) 320kgs to 1000 kgs |
| 12 INOX Car            | 31 HC Electric Traction & Hydraulic Goods Lifts 1000 kgs to 2000 kgs      |
| 13 INOX GOLD Car       | 32 HM Hydraulic Vehicle & Large Goods Lifts 2000 kgs to 4000 kgs          |
| 14 GLASS Car           | 33 RH & RG Residential Lift Electric Traction or Hydraulic 225 kgs        |
| 15 SUPERLUXE Car       | 34 Refurbishment  |
| 16 Mechanical Parts    | 35 S3ON Escalator 30°   |
| 17 Hydraulic Parts     | 36 S3OH Escalator 30°   |
| 18 Pushes & Displays   | 37 S35 Escalator 35°  |
| 19 Control Panels      | 38 S50 Inclined walkway (Travelator)                                      |
| 20 Doors               | 39 S60 Mechanical walkway (Travelator)                                    |
| 21 Metal Structures    | 40 Omega's Manufacturing Base & Offices Worldwide                         |
| 22 Hydraulic Platforms |   |

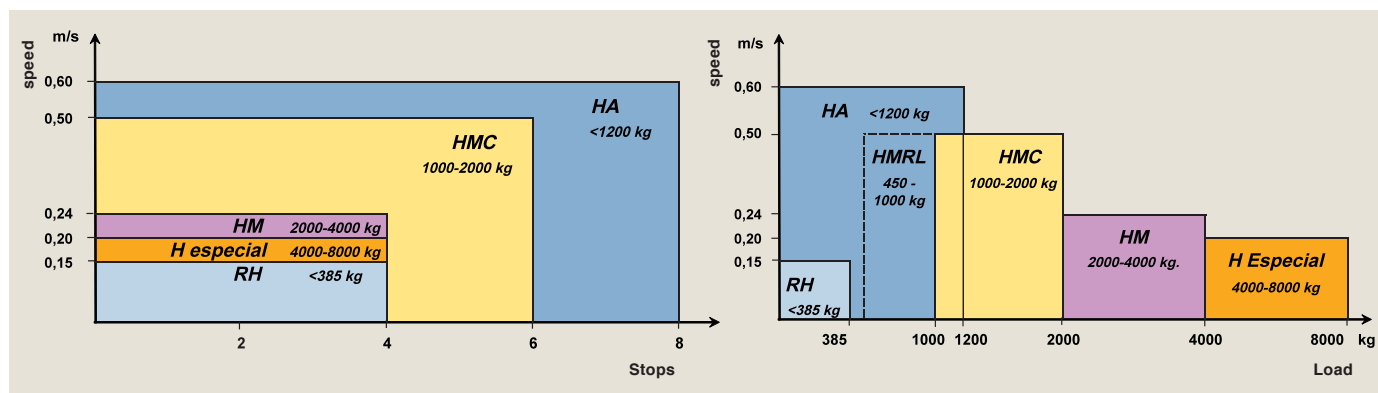


## RANGE

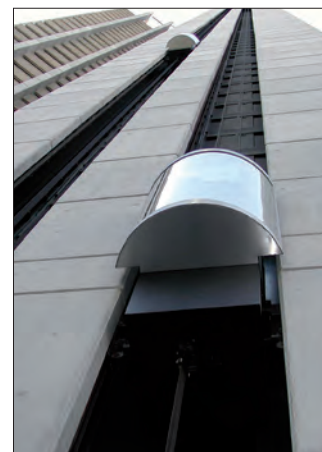
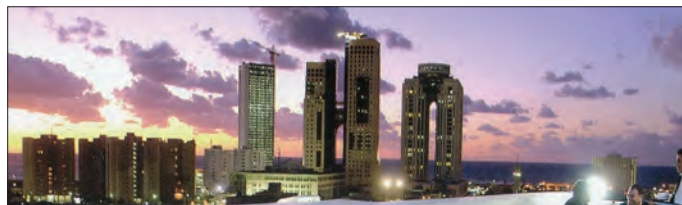
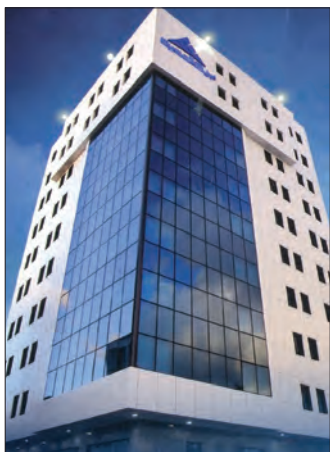
### TRACTION LIFTS



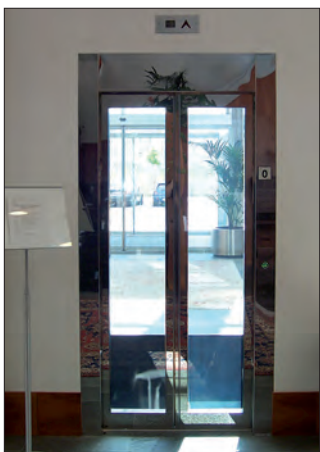
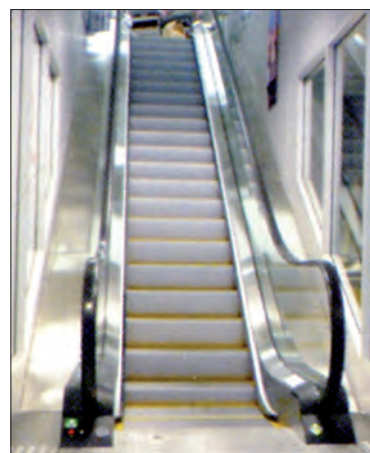
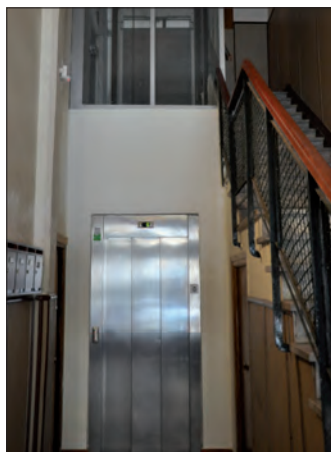
### HYDRAULIC LIFTS













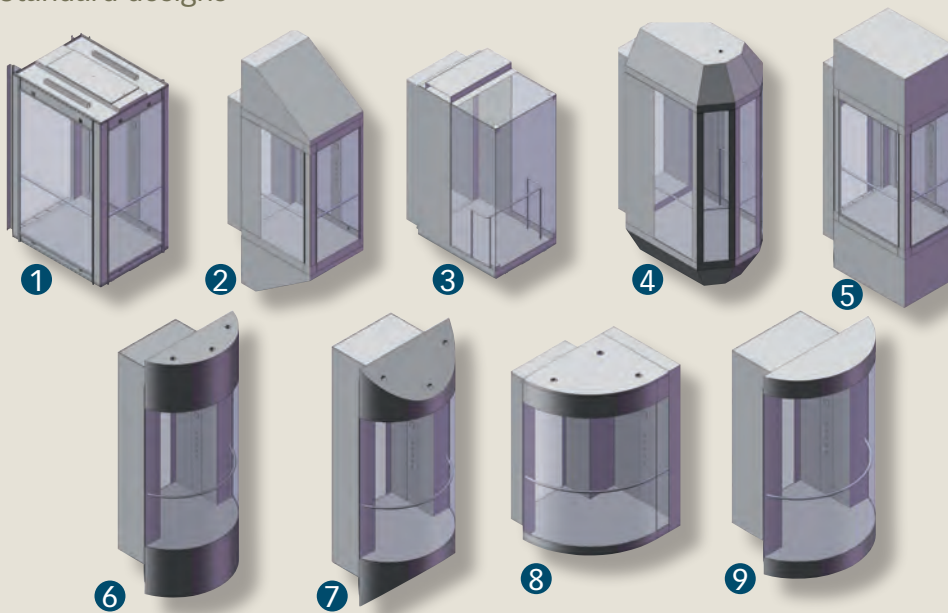
## PANORAMIC LIFTS

Panoramic Lifts from Omega can be installed internally or externally. We are able to offer designs from our standard range or to meet your requirements. Omega have Panoramic Lifts throughout Europe with travels up to 170 metres at a speed of 2.5 metres per second. Let our experience help you in planning your future project.

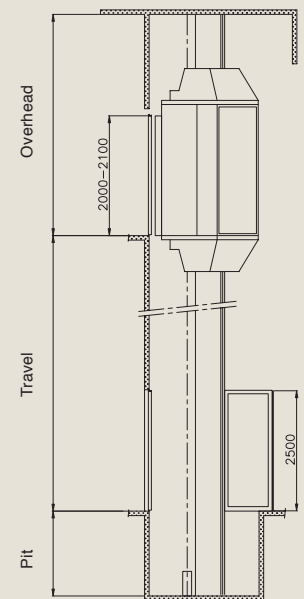


Our gearless machines have a lower electrical consumption with the option of using regenerative feedback into the local system.

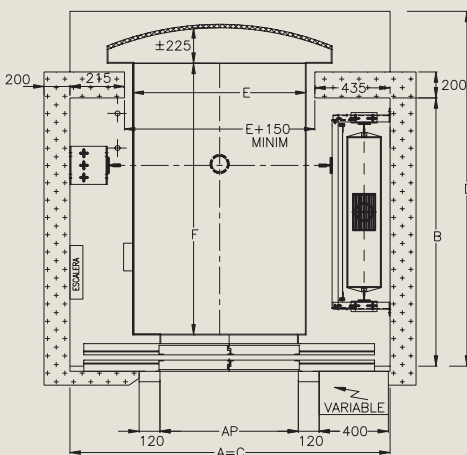
### Standard designs



### Vertical elevation



### Plan of pit



### Dimensions (mm.)

	PERSONS	8	10	13	16
kg	LOAD	630	800	1000	1200
AP	DOOR	800	900		
A	SHAFT WIDTH	1850	2000		2350
B	SHAFT DEPTH	1600	1600		1600
C	PIT	1850	2000		2350
D	PIT	2100			
E	CAR WIDTH	1000	1100	1250	1600
F	CAR DEPTH	1600			

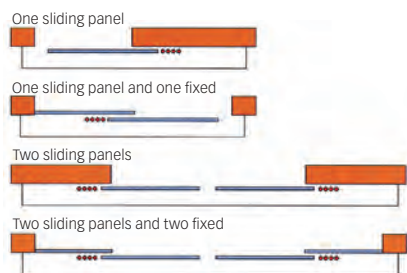
	SPEED (m/s)	1	1,6	1,75	2,5
PIT		1200	1300	1800	
OVERHEAD		4000	4300	4500	5000



# PASSENGER DOORS AND ENTRANCES

Our range of lift doors are complemented by a range of different door configurations from standard painted doors to glass door systems as shown. They are available in the various shapes and sizes from those shown below.

## LIGHTS



Prepared for heavy traffic, are silent and fast motion and high dynamic stability.

Voltage and frequency	230 V y 50 Hz	
Power	150 W	
Opening speed	1 panel	60 cm/s
	2 panels	120 cm/s
Permissible maximum travel	1 panel	120 kg.
	2 panels	70+70 kg cm/s



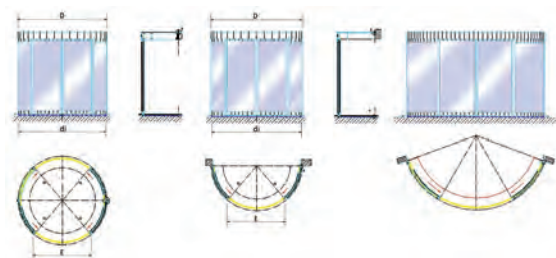
## TELESCOPIC



Voltage and frequency	230 V y 50 Hz	
Power	200 W	
Permissible maximum weight	4 panels: 80+80+80+80 kg	
	2 panels: 160+160 kg	
Opening speed	Adjustable up to 100 cm/seg	



## CIRCULAR



External D	200	2100	2300	2500	2700	2900	3100	3300
Outside di	1900	2000	2200	2400	2600	2800	3000	3200
E	1140	1210	1340	1470	1600	1725	1855	1980

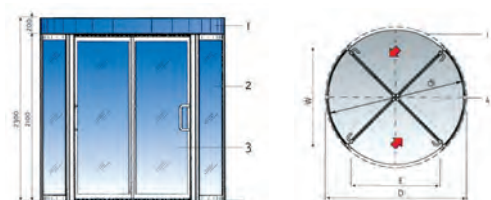
External D	200	2100	2300	2500	2700	2900	3100	3300
Outside di	1900	2000	2200	2400	2600	2800	3000	3200
E	1140	1210	1340	1470	1600	1725	1855	1980

Normal wide	1000	1200	1400	1600	1800	2000	2200	2400	2600
Total wide	2100	2500	2900	3300	3700	4100	4500	4900	5300



## SWIVEL



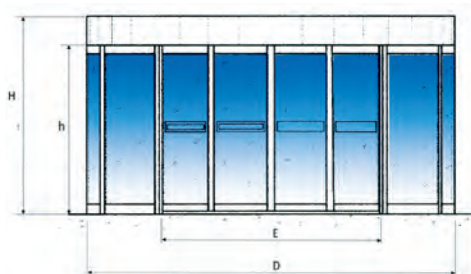
Options



D	2100	2300	2500	2700	2900	3100	3300
Di	2000	2200	2400	2600	2800	3000	3200
E	1315	1415	1600	1740	1880	2020	2160
W	1510	1650	1790	1930	2070	2215	2355



## SWIVEL - GR



Variants



D	3610	3910	4210	4510	4810	5110	5410
Di	3500	3800	4100	4400	4700	5000	5300
E	1650	1800	1950	2100	2250	2400	2550





OMEGA



# CABINS

The car interior is made up of a common body onto which the modular panels are fitted, this gives options on both the materials and designs which can be used offering greater flexibility and ease of installation.

The concept allows for a complete range of finishes such as steel, glass or wood. We have 7 standard ranges each offering a variety of options within that range.

## MODELS OF CABINS

ATLANTIC

PRESTIGE

SKY

INOX

INOX GOLD

GLASS

SUPERLUX





# CABIN

WALL PANELS: 8 Types, Formica, Laminate, Wood.

CEILING: 7 Different Designs.

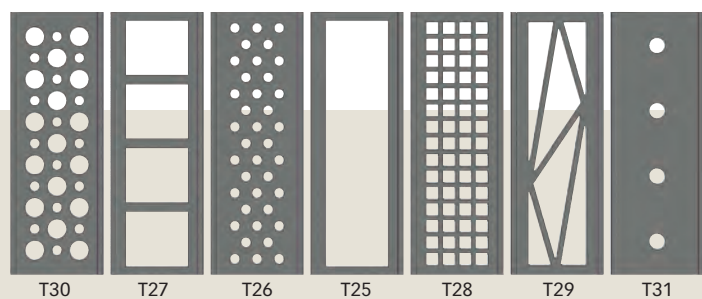
FLOORS: 5 Types, Rubber, Linoleum.

HANDRAIL: Steel or Wood.

MIRROR: Half Height.

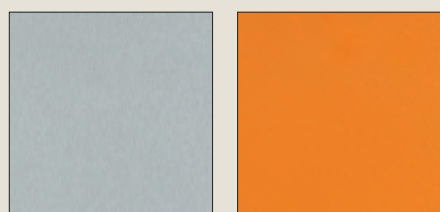
FRONT AND SKIRTING: Skinox.

## CEILING DESIGN Ceiling in Skinox F12



P01

P02



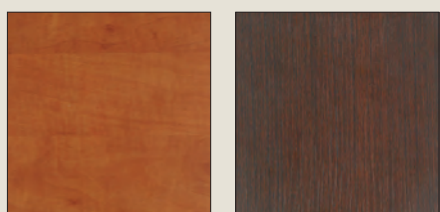
P03

P04



P05

P06



P07

P08



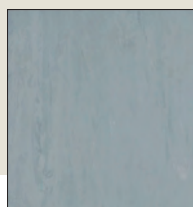
H33



H32



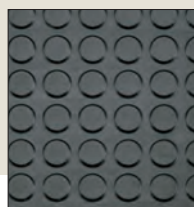
## FLOORS



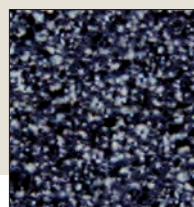
S16



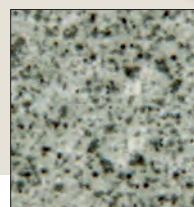
S17



S15



S18



S19

WALL PANELS: 4 Wooden Designs/Styles

CEILING: 7 Different diffuser patterns.

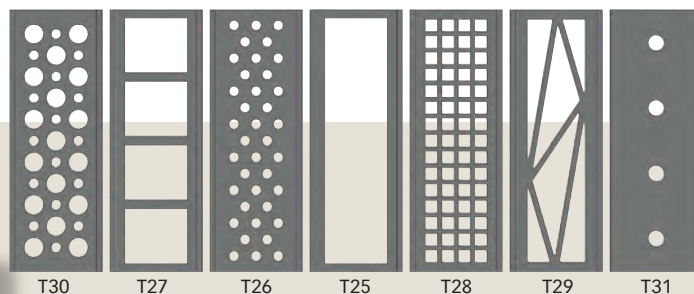
FLOOR: 8 Different rubbers and Granit.

HANDRAILS: Stainless Steel

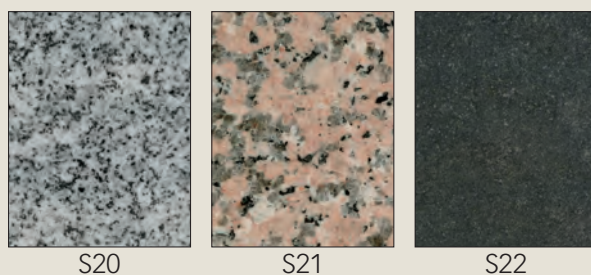
MIRROR: Half height rear wall

FRONT WALL: Stainless corners and skirting

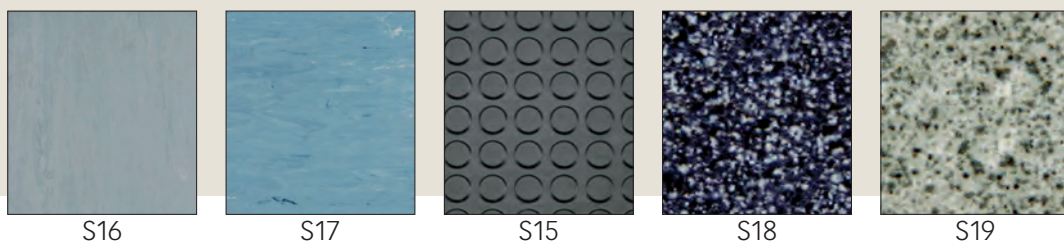
## CEILING DESIGN Ceiling in brushed Stainless Steel



## GRANIT



## FLOORS





# CABIN SKY

WALL PANELS: 4 Colours on Vinyl Skinplate.

CEILING: 7 Different Diffuser Patterns.

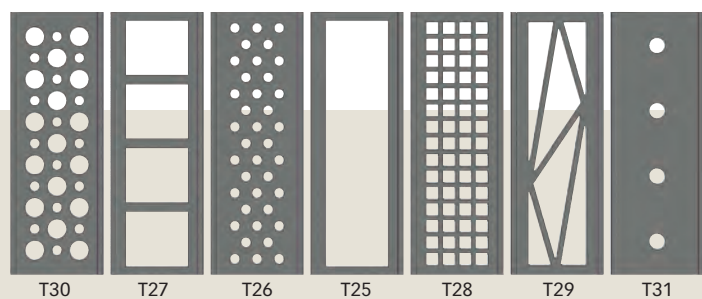
Floors: 5 Options in rubber and Linoleum.

HANDRAIL: Stainless Steel

MIRROR: Half height rear Wall.

FRONT WALL: Skirting and returns.

## CEILING DESIGN Ceiling in Skinox



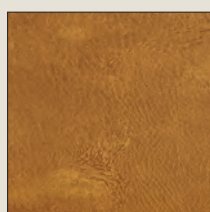
BLUE



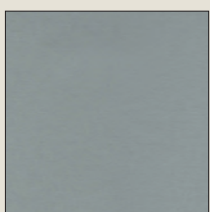
RED



GREY



LEATHER



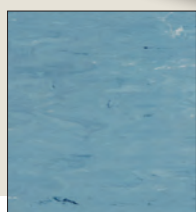
SKINOX



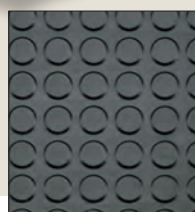
## FLOORS



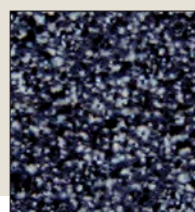
S16



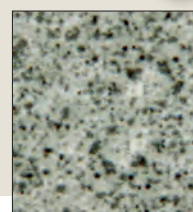
S17



S15



S18



S19

WALL PANELS: 4 Patterns of Stainless Steel.

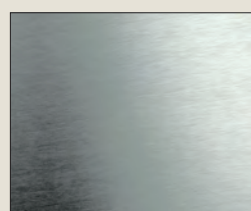
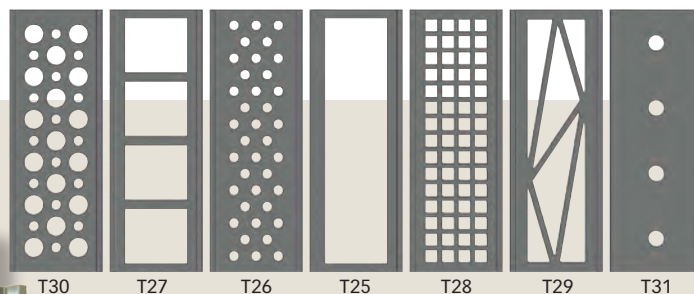
CEILING: 7 Different Ceiling Designs.

FLOORS: 10 Types from rubber to Granit.

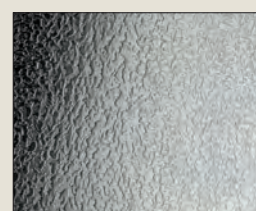
MIRROR: Half height rear wall.

FRONT: Stainless Steel corners and skirting.

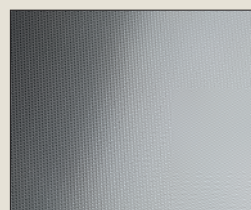
## CEILING DESIGN Ceilings in Brushed Stainless Steel



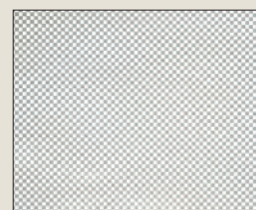
P09 - SATIN



P10 - ICE FLOWER

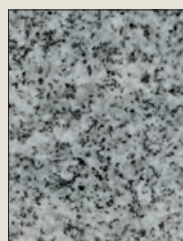


P11 - LINEN



P12 - CHECK

## GRANIT



S20

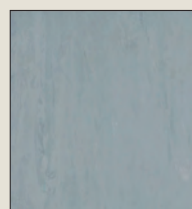


S21



S22

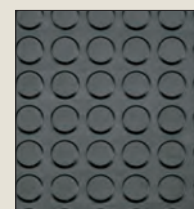
## FLOORS



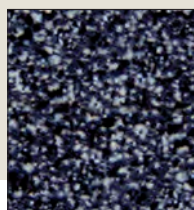
S16



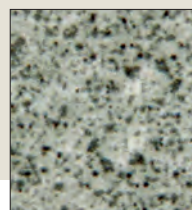
S17



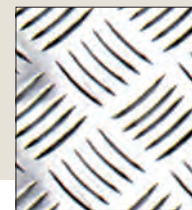
S15



S18



S19



S23



S24





# CABIN

## INOX GOLD

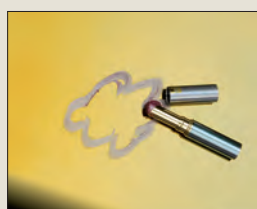
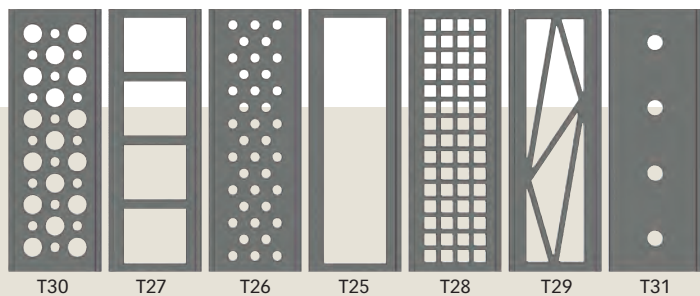
WALL PANELS: Rigidised Patterned Stainless steel Anti Vandal in either Linen or Ice Flower.

FRONT: In mirror Stainless Steel with Stainless mirror corner profiles.

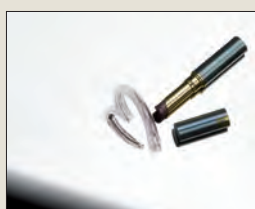
MIRROR: Half height to rear wall.

FLOOR: Granit.

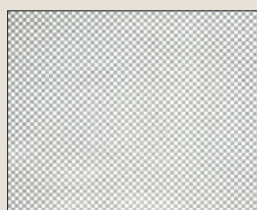
CEILING DESIGN Ceiling in mirror Stainless Steel



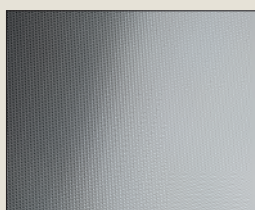
P70 - MIRROR GOLD



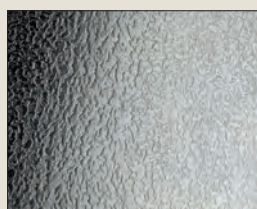
P71 - MIRROR



P12 - CHECK



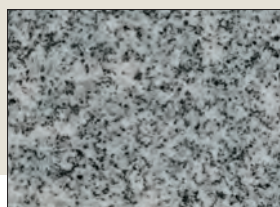
P11 - LINEN



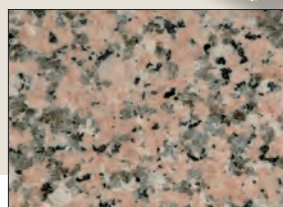
P10 - ICE FLOWER



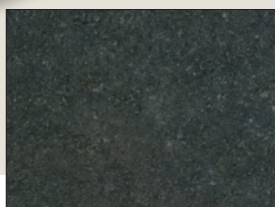
GRANIT



S20



S21



S22

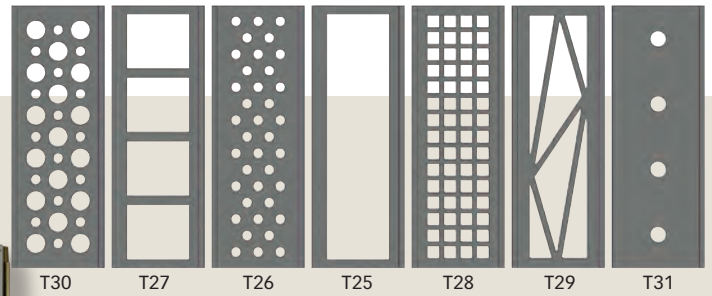


WALL PANELS: Glazed Panels with a choice of 4 finishes.

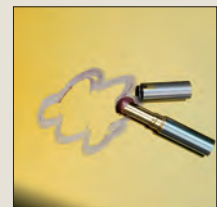
FRONTS: Skirting and corners in Stainless Steel.

FLOORS: Choice of 10 finishes.

## CEILING DESIGN Ceilings in Stainless Steel



P15



P16

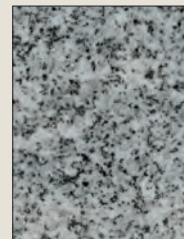


P13



P14

## GRANIT



S20

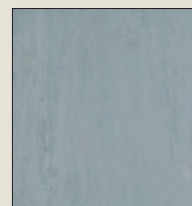


S21



S22

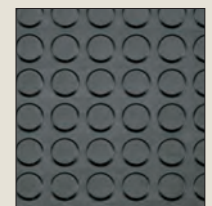
## FLOORS



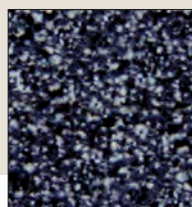
S16



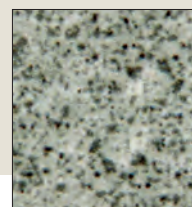
S17



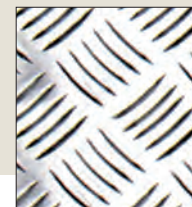
S15



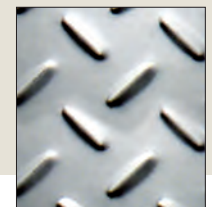
S18



S19



S23



S24



# CABIN SUPERLUXE

## CEILING DESIGN

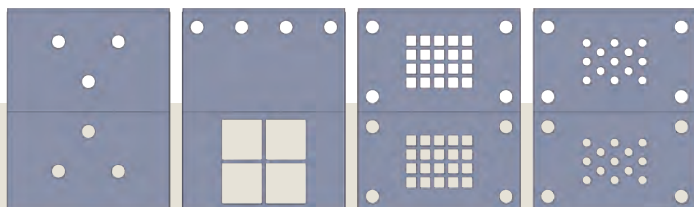
Ceiling in Satin Stainless Steel or Mirror Finish

WALL PANELS: Wood effect from choice of 4 different finishes.

FRONTS: Skirting and Corners in Satin Stainless Steel or Mirror finish.

MIRROR: Half height to rear wall.

FLOOR: Granit.



T72

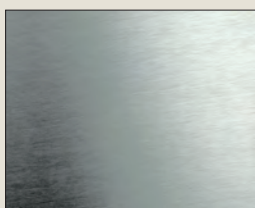
T73

T74

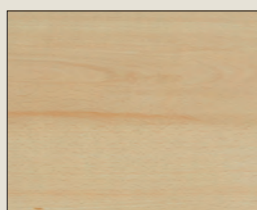
T75



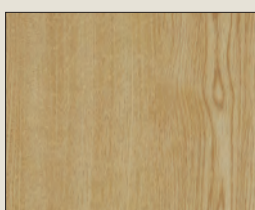
P71 - MIRROR



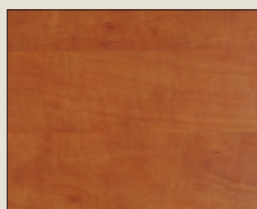
P09 - SATIN



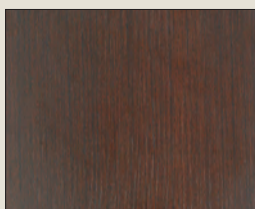
P05



P06



P07

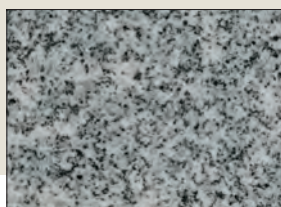


P08

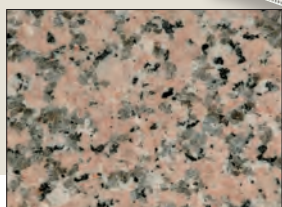
Special cabin.



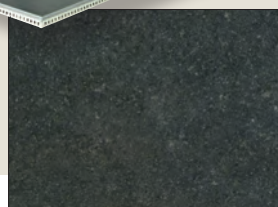
GRANIT



S20



S21



S22



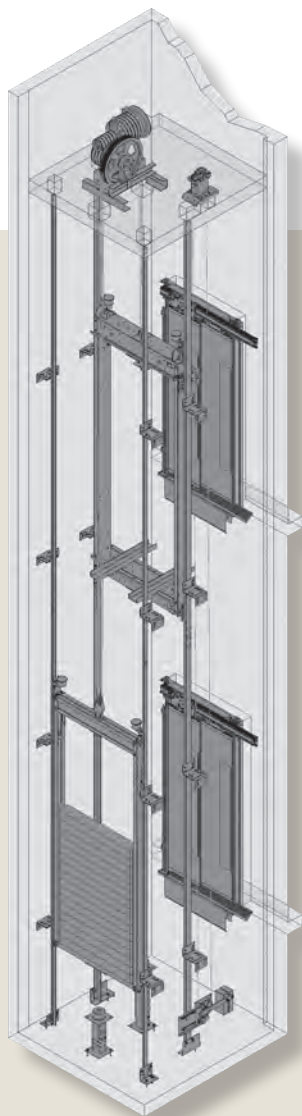
# SPARE PARTS FOR LIFTS

## SYNCHRONOUS GEARLESS MACHINE VVF DRIVE

OMEGA can provide all the components necessary to facilitate the modernisation of both high and low speed installations this will allow older systems to work in conjunction with VVF Technology.

This allows the car and counterweight to remain in place yet give the appearance and benefit of a modern lift installation.

### MODERNISATIONS



Can be used together with existing installations or for modernisations.



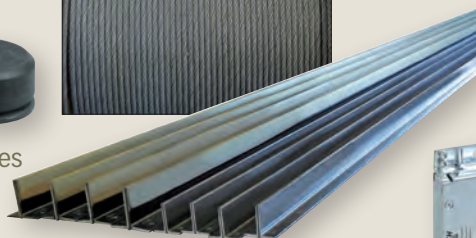
Buffers



Traction cables



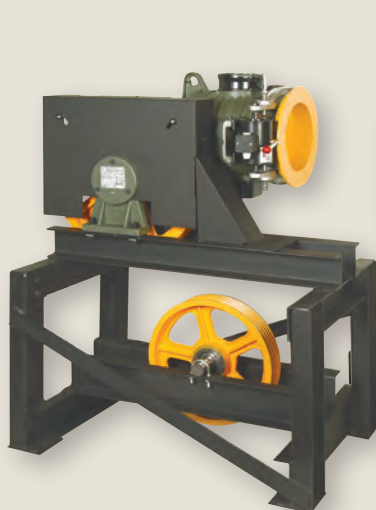
Guides



Engineered with VVF synchronous gearless



Progressive safety device located below the lift car.



Traction motors



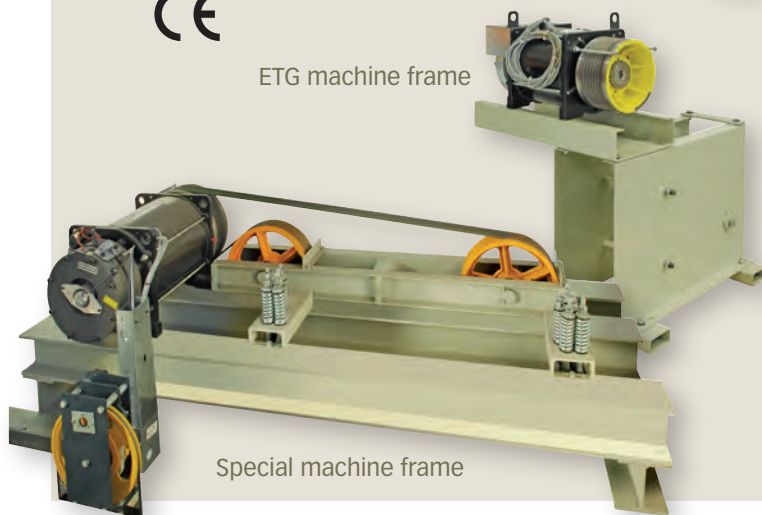
GEARLESS Z10



ETG machine frame



Speed governor



Special machine frame





# SPARE PARTS FOR LIFTS

## HYDRAULIC LIFT SPARE PARTS

Our Hydraulic Systems have been developed over the years between ourselves and MORIS one of the leading Hydraulic lift component Manufacturers in the world with currently over 100,000 units in service across the globe.



Split ram

Telescopic ram



Ram header



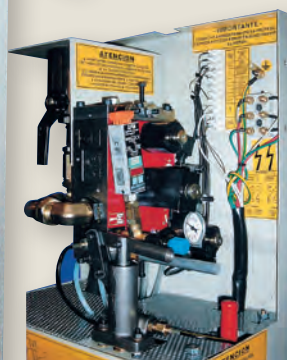
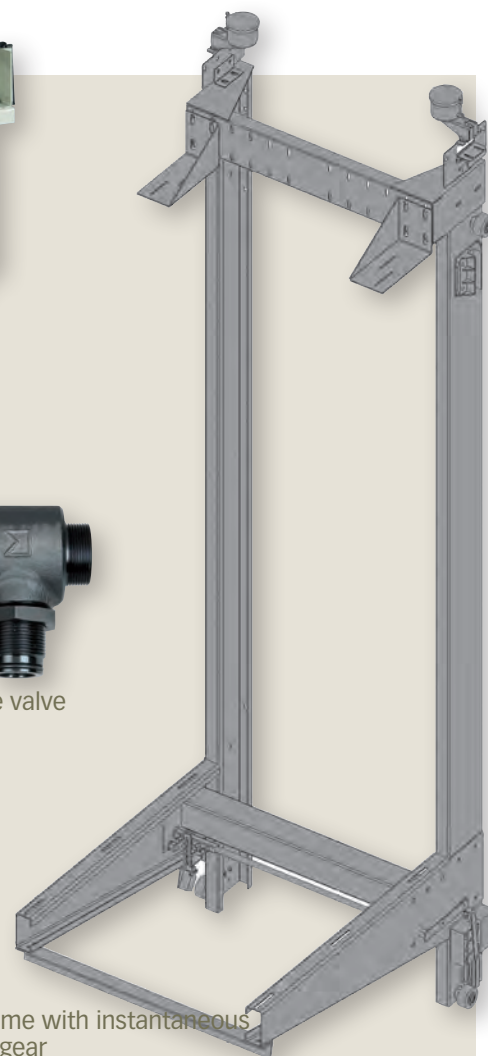
Submersible Hydraulic Pump Motor



Rupture valve



Car frame with instantaneous safety gear



Hydraulic block



Hydraulic tank

# BUTTONS AND SIGNALS.

## LANDING DOOR DISPLAY



B48



B49

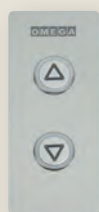
## LANDING DOOR PUSHERS PLUS



B34



B36



B76  
VITORIA



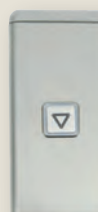
B37



B38



B39  
GILDA



B40



B46



B41

## MAXI GILDA



B47



B35

## CAR OPERATION PANELS (COP)



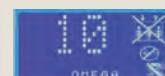
## MODERNISATIONS



C51



C52



C53

## PUSH BUTTON



C58



C55



C56



C57

- OMEGA offers pushbutton control and signaling, with advanced technology products and highly functional designs.
- Push buttons are anti-vandalic installed on solid decorative stainless steel plates.
- The displays are programmable. Digital dot matrix type and LCD
- All lighting elements are LED type with low power consumption.

## LANDING DOOR ARROW



## COP TYPE RESI



## CAR ARROWS





# ELECTRICAL SWITCHING

## CONTROL PANELS - ELECTRICAL SWITCHING

COMPACT  
Taurus  
Hydrus



ETM Traction



Hydraulic



Resilift



Regeneration Control System

- Microprocessor control system up to 16 stops and 1 m/s speed
- Available for duplex system (2 lifts)



Power cabinet (shaft)



Standard



Compact



MRLH

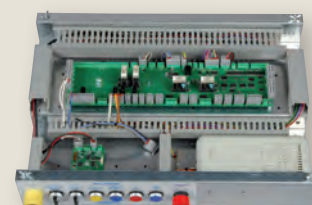
- Offering the facility to replace generated energy back into the network (EMERSON system)

REVOLUTION  
ORION



- CAN BUS system
- Up to 64 stops
- Up to 3 m/s speed
- Traffic monitoring system and dispatcher available
- EMERSON drive VVF

CAR TOP CONTROLLER



- Car top controller
- CAN BUS system



# CAR AND LANDING DOORS

OMEGA has its own automatic doors EKOLINE offering a modern design, high efficiency and good dynamic stability, driven by VVF.

Regulation during assembly is minimal, being easily adjustable and the possibility of absorption of defects in the system. Supplied disassembled which can easily replace components, if necessary. Electrical contacts manufactured by SCHMERSAL. Epoxy paint finish or stainless steel....



## SIDE TYPE



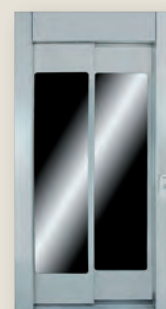
D60



D61



D62



D63

## CENTRE TYPE



D64



D65



Central 6H



2H Big vision

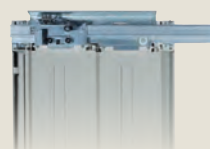
## MECHANISMS AND OPERATORS



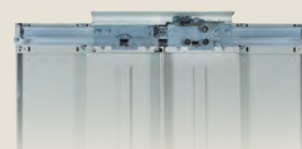
2 panels side mechanism



4 panels centre mechanism



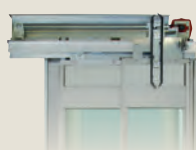
2 panels mechanism



2 panels centre mechanism



Folding car door



2 panels side operator

### OPERATING

- Soft and silent
- VVF mono-phase
- Electric contacts SCHMERSAL

## SEMI-AUTOMATIC LANDING DOORS

For modernisation

### FINISHES

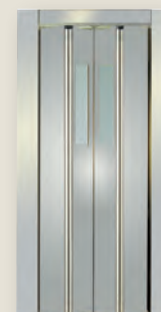
- Prime coat epoxi RAL 7032
- Satin stainless steel
- Special stainless steel
- Skinplate
- Glass



D66



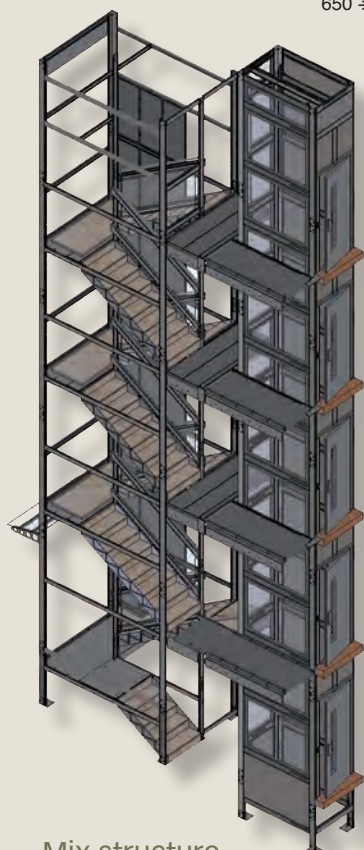
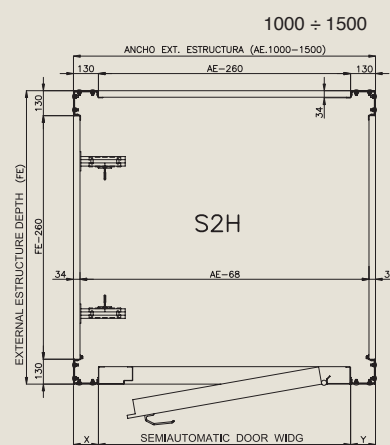
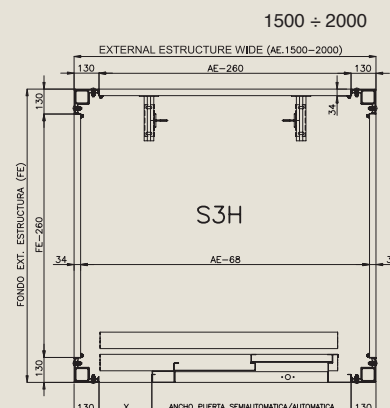
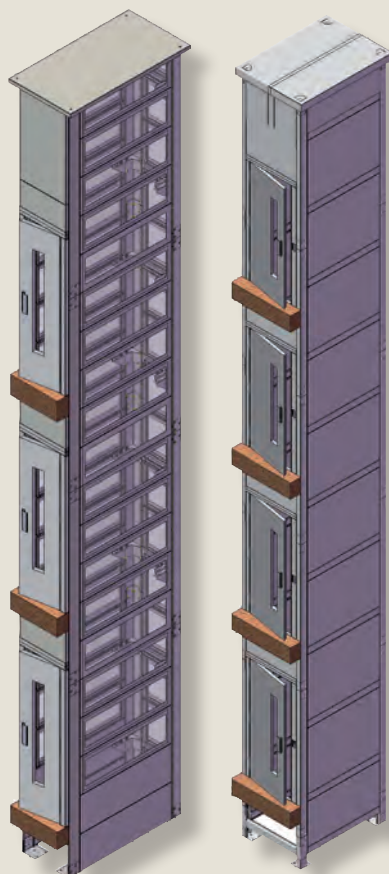
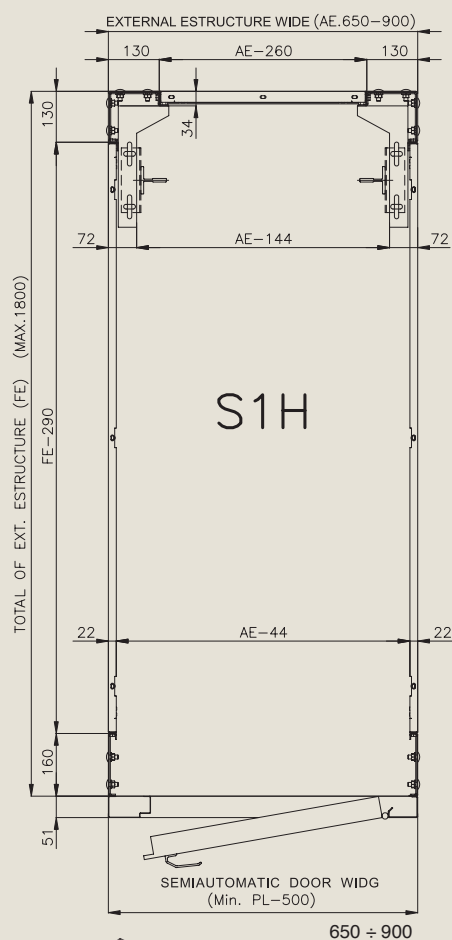
D67



D68



# METALLIC STRUCTURES FOR LIFTS



Mix structure.  
Great design

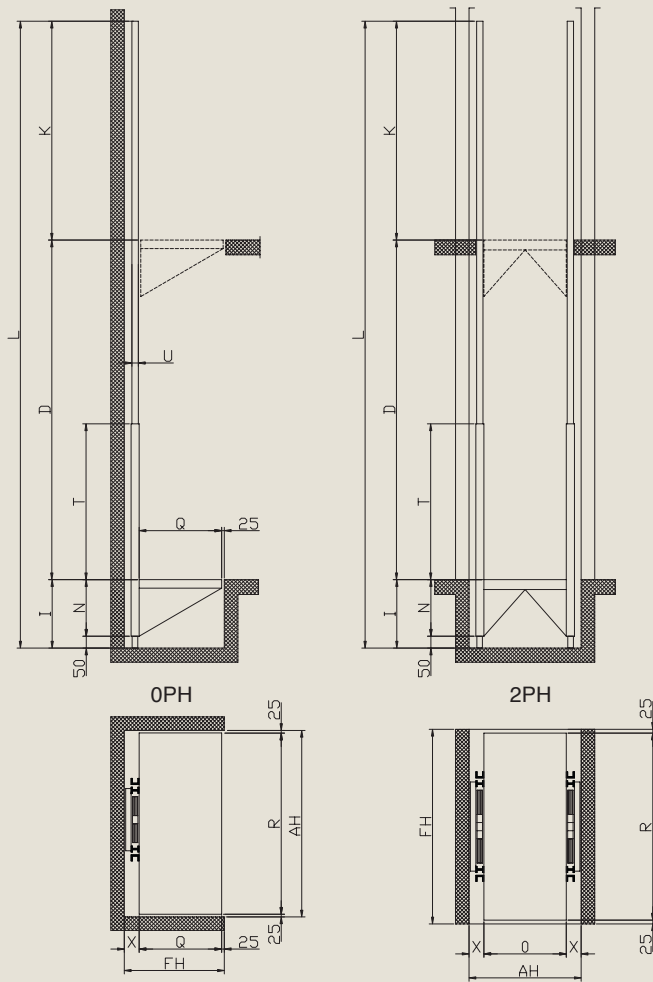
**OMEGA** has extensive experience in modernisation of buildings for elevator application, specifying 3D design, allowing customer choice.

**OMEGA** designs and manufactures single and mixed structures .

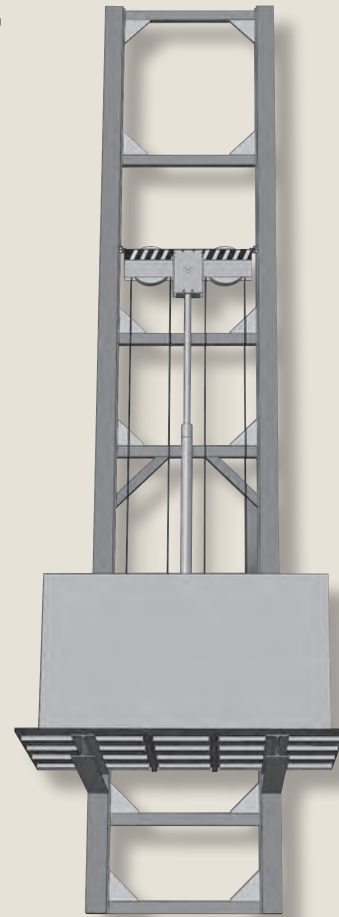


- Bolted Structures, do not require adjustments and offer a simple installation
- Cladding may be steel or glass
- Hydraulic and MRL traction lifts can be adapted with semiautomatic and automatic doors.
- Can be installed in both indoor and outdoor areas
- Primed epoxi finished or glass

# HYDRAULIC PLATFORMS



FROM 150 TO 8000 KGS



4PH Type 4 pillars



## SPECIFICATIONS

- Speed 0.15 m/s.
- Travel up to 12 metres.
- Hydraulic Chrome Piston with Safety Device.
- Traction cables of 10 mm for Greater Safety.
- Centrally located Hydraulics for greater efficiency.
- Guide rollers with Metal Bearings.
- Platform floor formed from sheet steel.
- Automatic controls.

TYPE		LOAD KG	MOTOR Kw	SIZE Q x R	PIT mm.	ACTION
1 PILLAR	OPH	150	150	0.6	700 x 700	200
		300	300	0.75	1000 x 800	300
		600	600	1.1	1100 x 1100	300
		1000	1000	2.2	1400 x 1200	350
		1500	1500	4.1	1700 x 1300	450
		2000	2000	5.5	2000 x 1600	550
2 PILLARS	2PH	2000	2000	5.5	2000 x 3000	350
		3000	3000	8.8	2300 x 5000	400
		4000	4000	12	2300 x 5000	500
4 PILLARS	4PH	5000	5000	14.8	2500 x 5500	600
		6000	6000	18.4		600
		7000	7000	18.4		600
		8000	8000	22		600

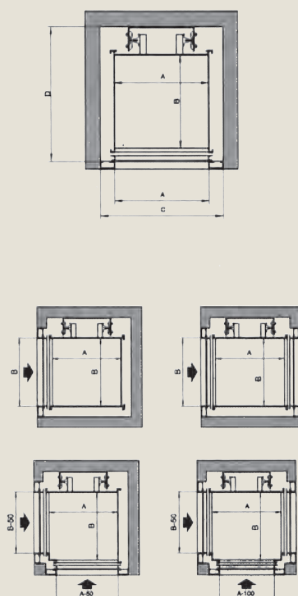
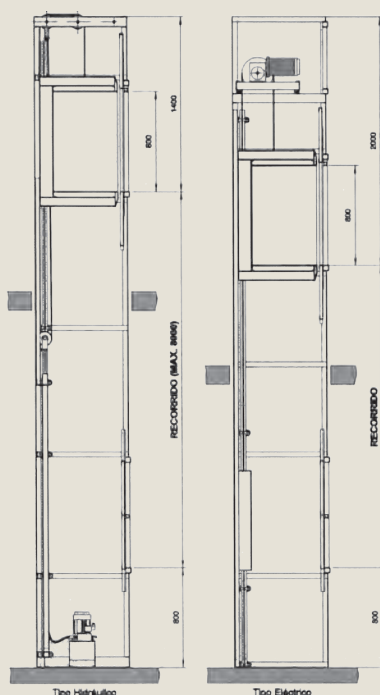


# SERVICE LIFTS

## HYDRAULIC SERVICE LIFT MH



- Hydraulic drive up to 8 m of travel.
- Electric drive up to 15 m of travel.
- Wall mounted or self-supporting structure.
- Car with 1, 2 or 3 entrances.
- Guillotine style landing doors.
- Push Button to call and send to all floors.
- Audible arrival signal
- Standard for loads of 50 to 100 kg.



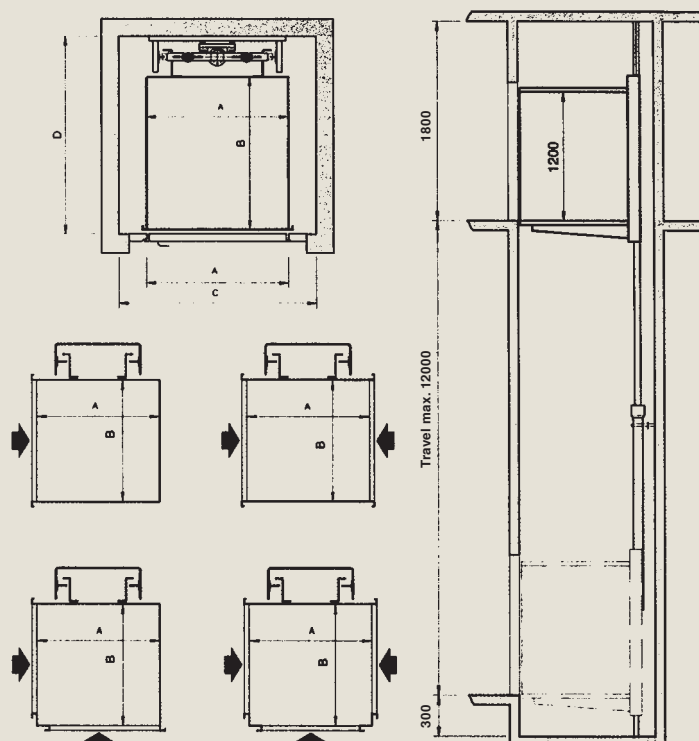
TYPE	LOAD kg.	POWER Kw
MH 50	50	0.5
MH 100	100	0.75

INSTALLATION	A	B	C	D
Without estructure	350	350	A+150	B+225
	700	700		
With estructure	350	350	A+280	B+310
	700	700		

## HYDRAULIC GOODS ONLY LIFTS MTH



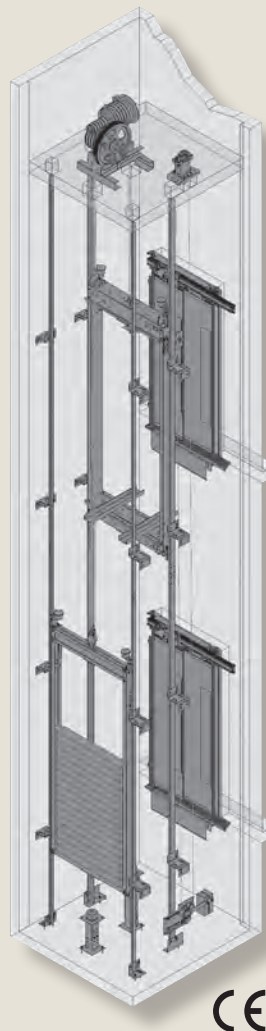
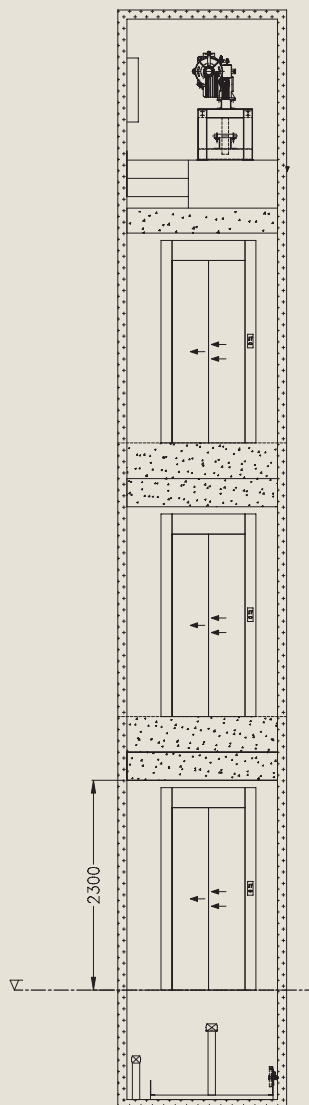
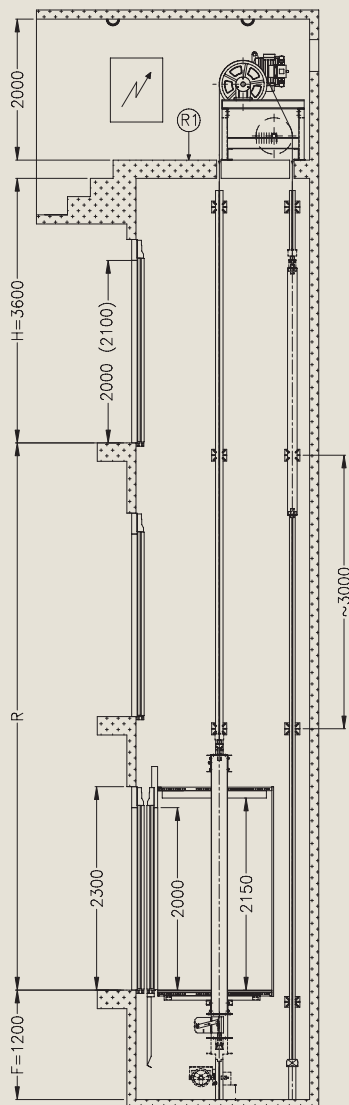
- Hydraulic drive up to 12 m of travel.
- Wall mounted or self-supporting structure.
- Car with 1, 2 or 3 entrances.
- Swing landing door.
- Push Button to call and send to all floors.
- Audible arrival signal
- Standard for loads of 200 to 300 kg.



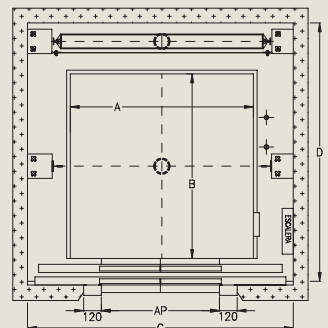
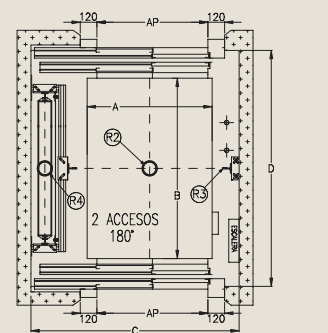
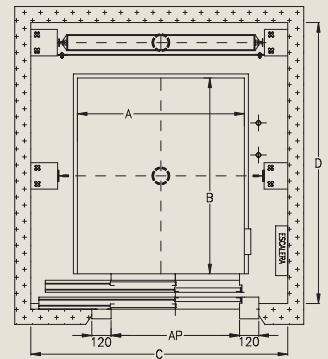
TYPE	LOAD kg.	POWER Kw
MTH 200	200	0.75
MTH 300	300	1.1

INSTALLATION	A = B	C	D
Without estructure	700 ÷ 1000	A+150	B+270
With estructure	700 ÷ 1000	A+300	B+360

## ETM TRACTION LIFT with machine room



4, 6 and 8 PERSON



K140 Machine



120 c/h

### RESIDENTIAL ELEVATOR

- Traction System with Machine Room.
- Variable Voltage Variable Frequency.
- Smooth and Silent.
- Recommended for up to 16 Floors with a speed of 1.0 m/s.
- Greater Acceleration away from floors accompanied by smooth deceleration into destination floor.
- Simplex or Duplex Down Collective.
- Standard Epoxy painted in cream RAL7032.
- Quiet operation only 40db.



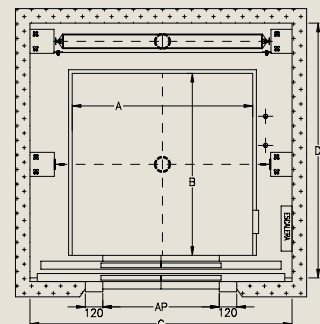
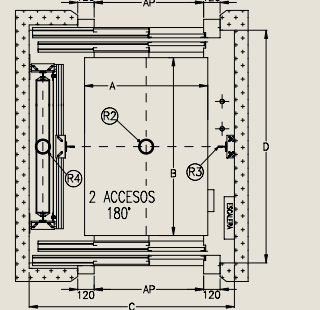
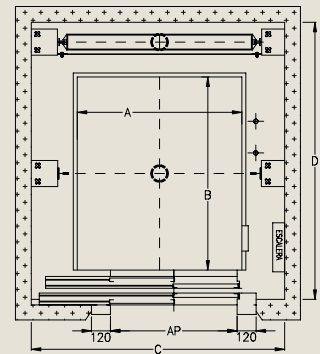
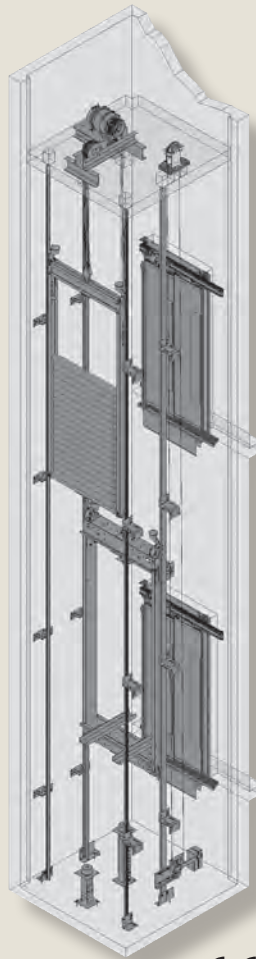
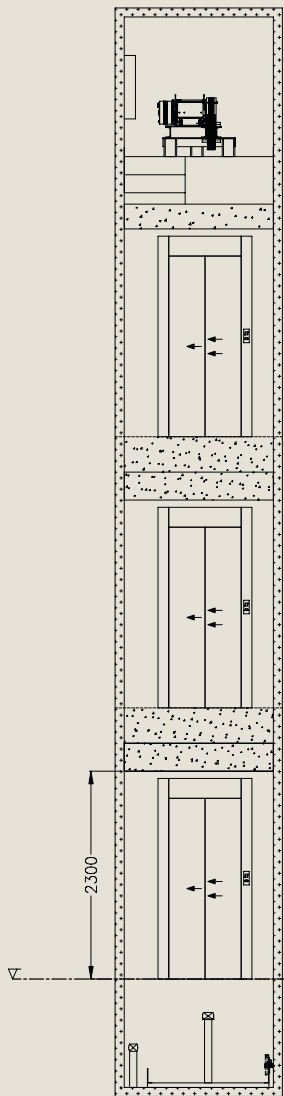
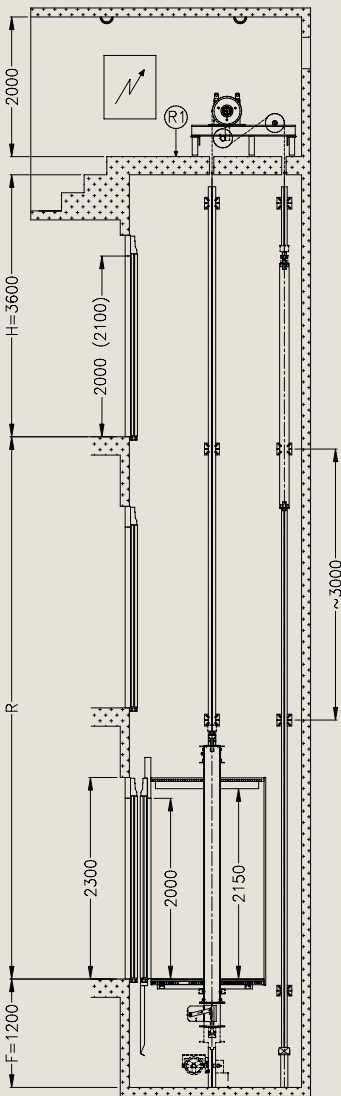
TYPE	LOAD kg.	PERSON	CAR SIZE AxB mm.	SHAFT SIZE Cx D mm.	DOORS mm.	ROPING 1:1 SPEED 1 m/s REACTION LOADS (kN)			
						R1	R2	R3	R4
410VF	300	4	1000X900	1400X1350	700	8	24	7	18
610VF	450	6	1000X1250	1500X1650	800	11	36	9	27
810VF	630	8	1100X1400	1600X1900	800/900	15	50	12	38

- With two entrances 180 ° increase only at 200 mm depth
- With centre opening doors increase only at 250 mm wide



# ETG TRACTION LIFT with machine room

8, 10, 13 and 16 PERSON



Gearless Synchronous VVF Motor

180 c/h

## MEDIUM TO HIGH RANGE LIFT WITH HIGH TRAFFIC

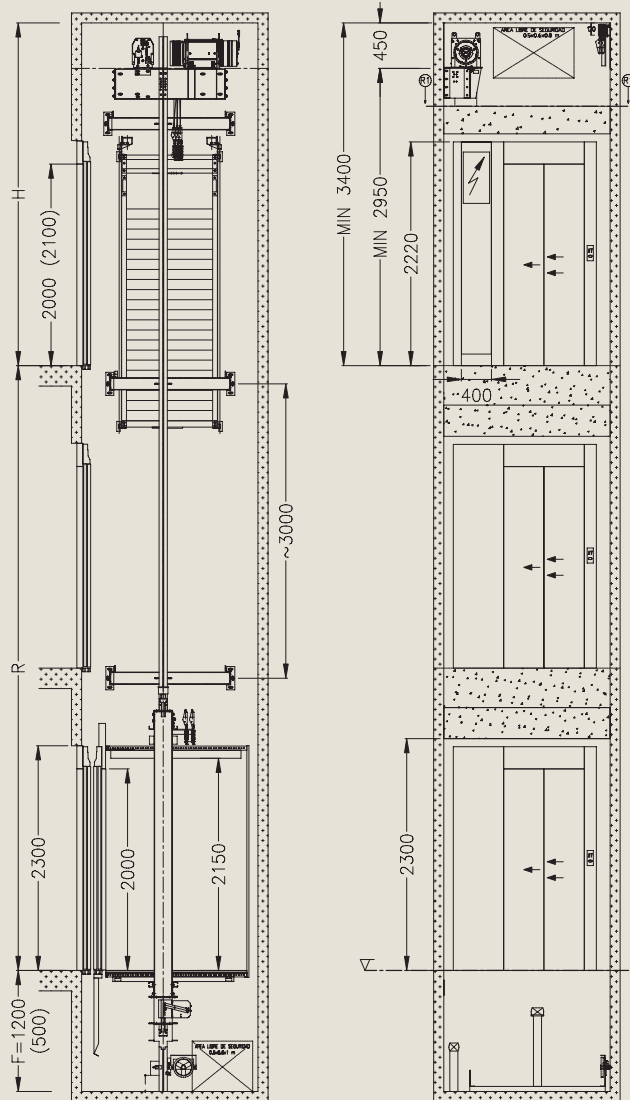
- Traction Systems with machine room Variable Voltage Variable Frequency.
- Smooth and Silent.
- Comfortable ride.
- Recommended for up to 30 Floors. Suitable for Housing, Offices, Hotels.
- Suitable for simplex or multigroup configurations offering full collective control.
- Quiet Operation – only 40db.

TYPE ETG	LOAD kg.	PERSON	SPEED m/s	CAR AxB mm.	SHAFT CxD mm.	DOORS mm.	ROPING 1:1 REACTION LOADS (KN)			
							R1	R2	R3	R4
8100	630	8	1.00	1100 X 1400	1550 X 1900	900	15	50	12	38
8160			1.60							
8175			1.75							
10100	800	10	1.00	1300 X 1400	1750 X 1900	900	19	64	16	48
10160			1.60							
10175			1.75							
13100	1000	13	1.00	1400 X 1600	1850 X 2100	900	23	80	20	60
13160			1.60							
13175			1.75							
16100	1250	16	1.00	1500 X 1750	1950 X 2250	1000	29	100	25	75
16160			1.60							
16175			1.75							

- With two entrances 180° increase only at 200 mm depth
- With centre opening doors increase only at 250 mm wide

## MQM ELECTRIC TRACTION MACHINE roomless

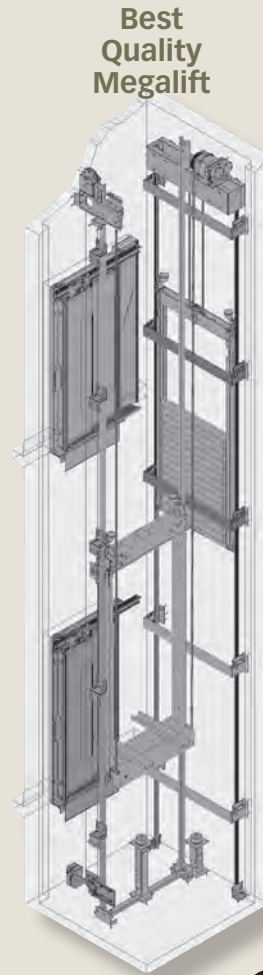
MRL 4, 6, 8, 10 and 13 PERSON



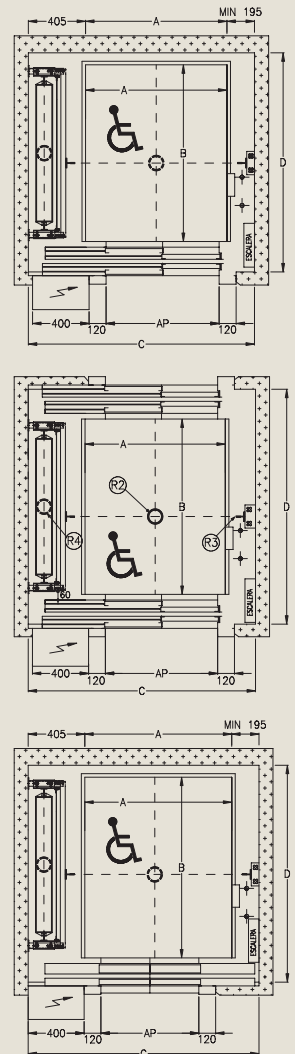
Vertical Section  
Synchronous Gearless VVF Motor



180 c/h



Types Test Certificated **EN 81.1**



Plan

### LIFT FOR RESIDENTIAL, OFFICE MID RISE

- MRL Traction Gearless VVF.
- Smooth and Silent Operation.
- Recommended for up to 20 Floors.
- Simplex, Duplex, Triplex, Multiplex Configuration.
- Full Collective.
- Only 35db (A).
- Automatic rescue systems included as Standard.

TYPE MQM	LOAD kg.	PERSON	CAR SIZE AxB mm.	SHAFT SIZE Cx D mm.	DOORS mm.	ROPING 2:1				SPEED m/s
						R1	R2	R3	R4	
410	320	4	1000 X 900	1450 X 1450	700	8	24	7	18	1.00
416										1.60
610	450	6	1000 X 1250	1550 X 1650	800	11	36	9	27	1.00
616										1.60
810	630	8	1100 X 1400	1650 X 1800	800/900	15	50	12	38	1.00
816										1.60
1010	800	10	1300 X 1400	1900 X 1800	900	19	64	16	48	1.00
1016										1.60
1310	1000	13	1400 X 1600	2000 X 2000	900	23	80	20	60	1.00
1316										1.60

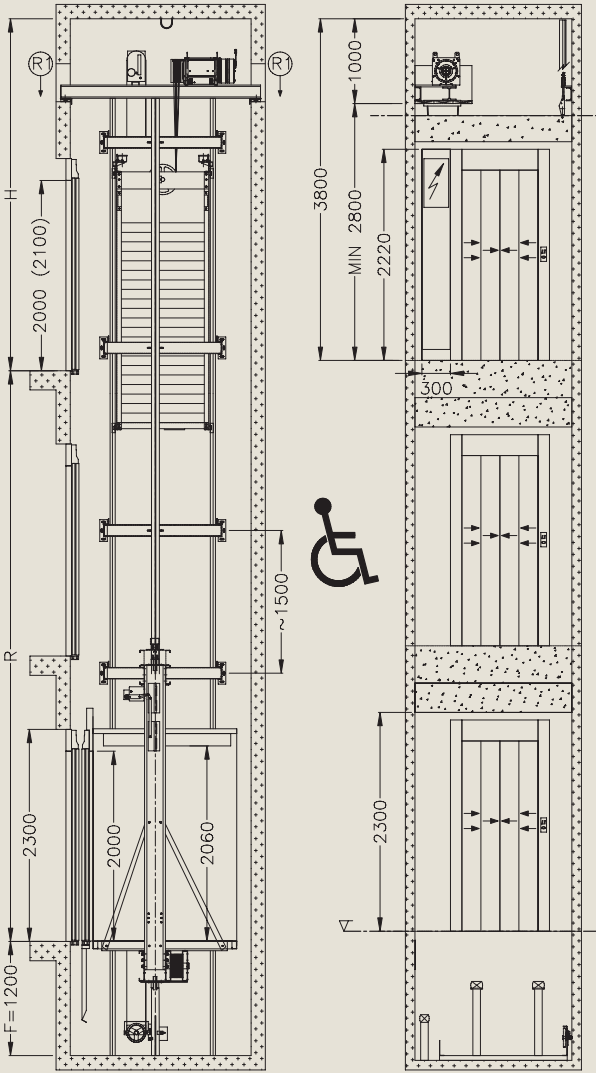
• For Double Entrance (180°) Add 200mm on the Depth.



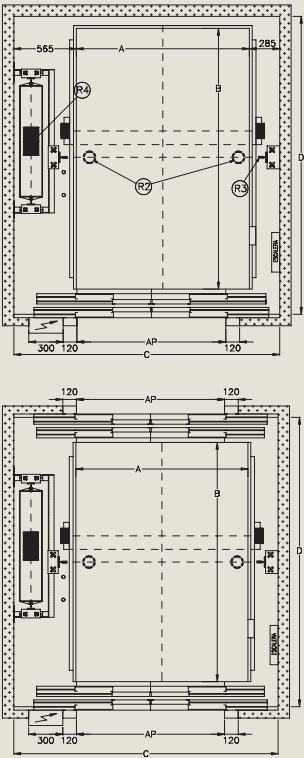
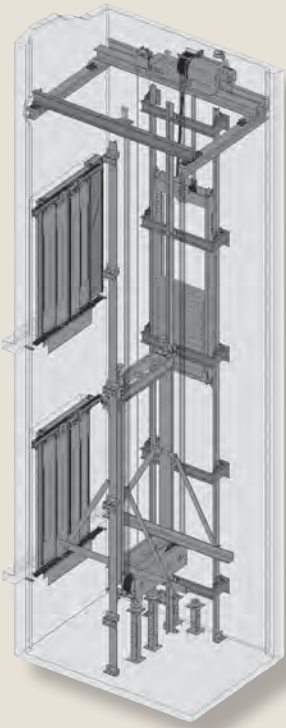
# MEC 2 ELECTRIC TRACTION MACHINE roomless

MRL 16, 20 and 26 PERSON

Megalift comercial



Vertical section



Plan

Types Test Certified  
0056/AEM/0040 **EN 81.1**

Synchronous Gearless VVF Motor



**LIFT IDEALLY SUITED FOR HOSPITALS, HIGH RISE APARTMENTS, COMMERCIAL MID TO HIGH RISE**

- MRL Traction Gearless VVF.
- Smooth Silent Operation.
- Ideally Suited to Office, Hospital and Residential.
- Recommended for up to 20 Floors.
- Simplex, Duplex, Triplex or Multiplex Configuration.
- Fully Collective.
- Only 40db (A).
- Automatic rescue system included as standard.

180 c/h

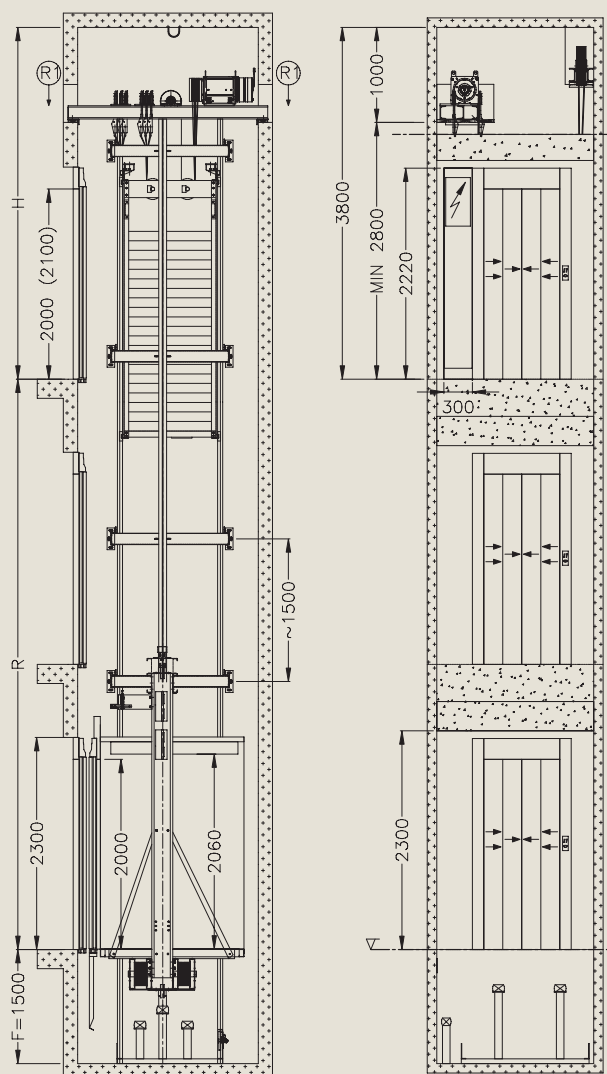
TYPE	LOAD kg.	PERSON	CAR SIZE AxB mm.	SHAFT SIZE Cx D mm.	DOORS mm.	ROPING 2:1				SPEED m/s
						R1	R2	R3	R4	
<b>MEC 2</b>										
1610	1250	16	1500 X 1750	2350 X 2100	1100	39	110	27	82	1.00
1616										1.60
2010	1500	20	1400 X 2200	2250 X 2450	1200	45	130	33	97	1.00
2016										1.60
2610	2000	26	1500 X 2700	2350 X 3050	1300	52	150	38	112	1.00
2616										1.60

- For Double Entrance (180°) add 200mm on the depth.

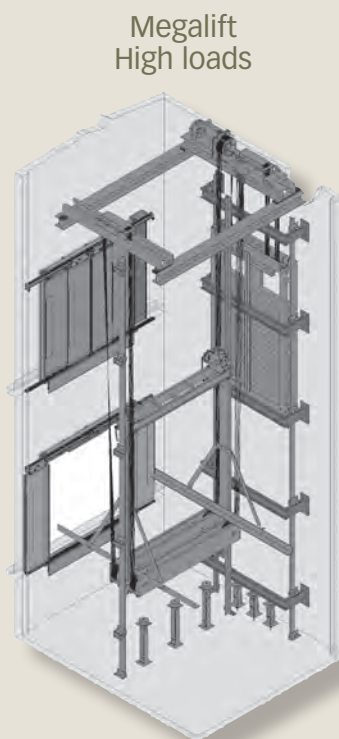



## MHL2 GEARLESS TRACTION LIFT

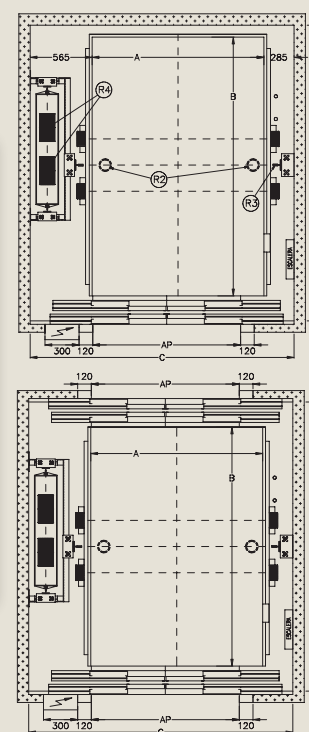
## MRL 32, 40, 46 and 53 PERSON



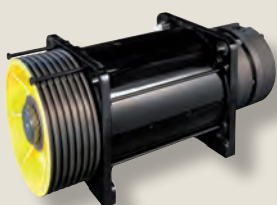
### Vertical Section



Types Test Certificated  
0056/AEM/0040 **EN 81.1** 



### Plan



### Synchronous Gearless VVF Motor

**FOR USE IN COMMERCIAL, INDUSTRIAL AND PRIVATE BUILDINGS**

- Motor room less lift VVF
- High confort, soft start and silent
- Standard range up to 10 stops.
- Sound level less than 45 dB (A)
- If power is lost, the lift will move automatically to the nearest floor opening the doors on arrival at next floor.

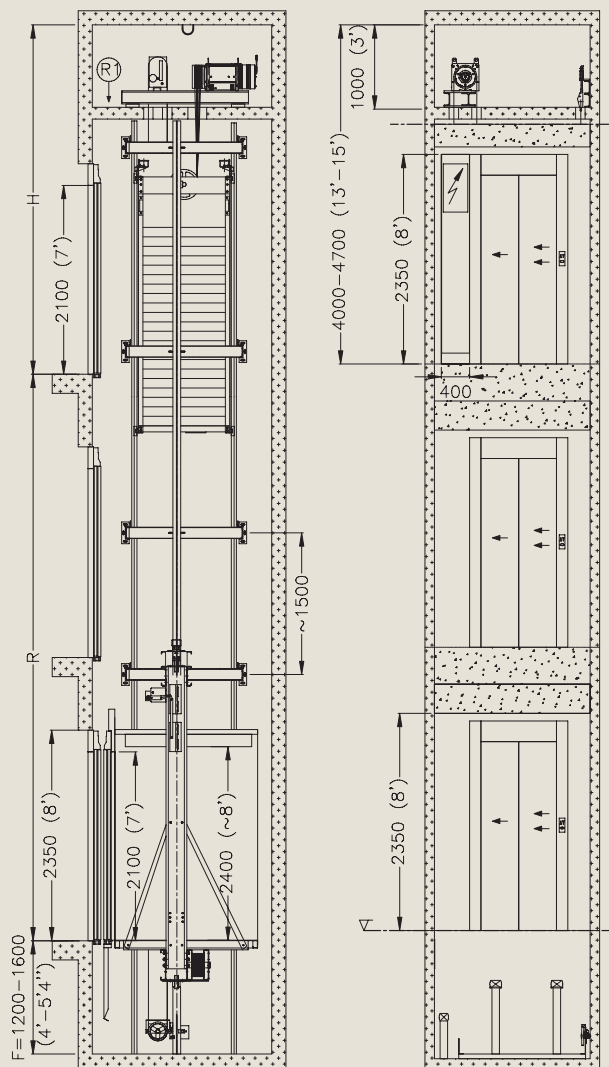
120 c/h

120 c/h						ROPING 2:1				
TYPE	LOAD	PERSON	CAR SIZE	SHAFT SIZE	DOORS	REACTION LOADS (KN)				SPEED
MHL	kg.		AxB mm.	CxD mm.	mm.	R1	R2	R3	R4	m/s
3205	2500	32	2000 X 2300	2800 X 2650	1400	68	200	50	150	0.50
3208										0.80
4005	3000	40	2200 X 2500	3000 X 2850	1400	80	240	60	180	0.50
4008										0.80
4605	3500	46	2300 X 2700	3100 X 3050	1600	105	320	80	240	0.50
4608										0.80
5305	4000	53	2400 X 3000	3200 X 3350	1800	130	400	100	300	0.50
5308										0.80

- For Double Entrance (180°) add 200mm on the depth.

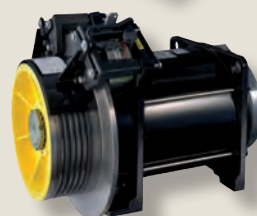
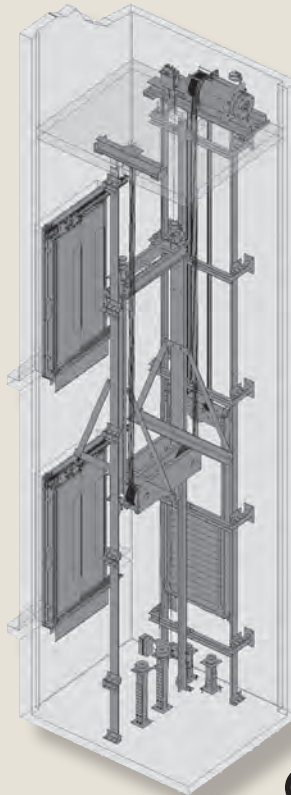


# AMEC GEARLESS TRACTION LIFT. STANDARD ASME A17.1 USA



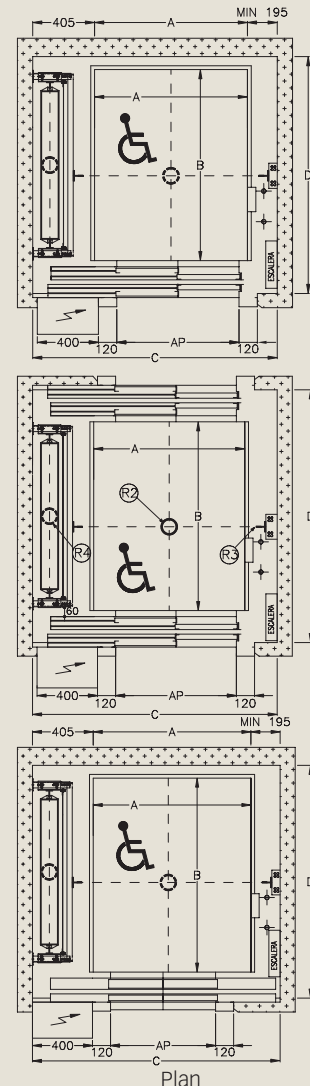
Vertical Section

Available with machine room or room less.



Synchronous Gearless VVF (Oil free)

## FROM 13 to 26 PERSON



Plan

- From 2 up to 50 stops
- Low energy consumption
- Best solution for replacement of hydraulic lifts
- Roomless machine up to 20 stops
- Low sound level less than 45 dB

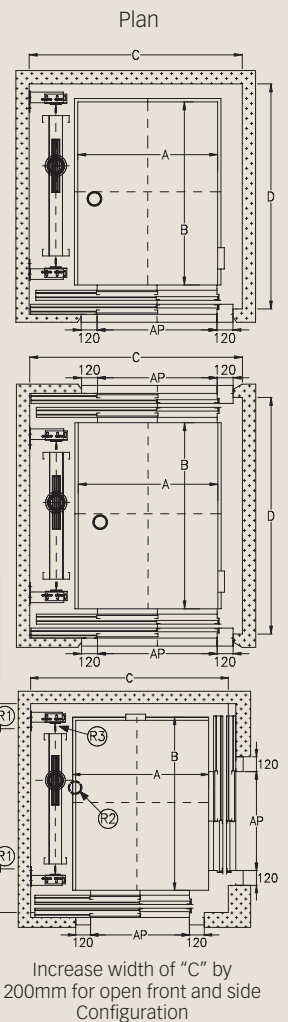
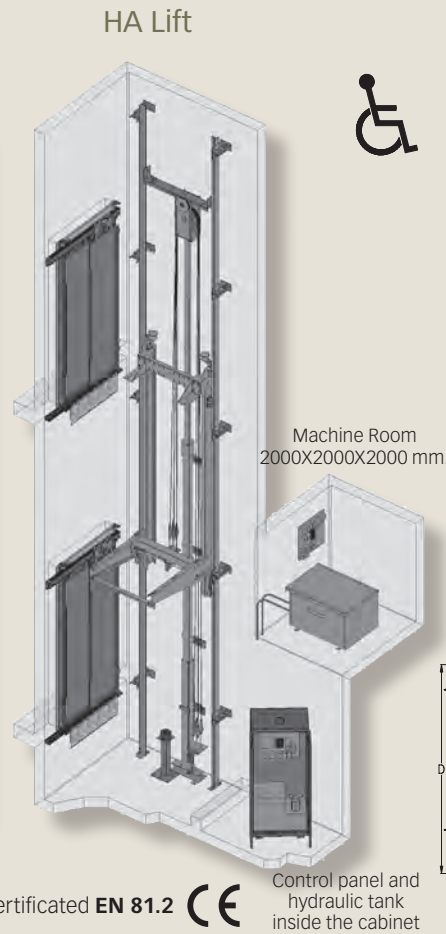
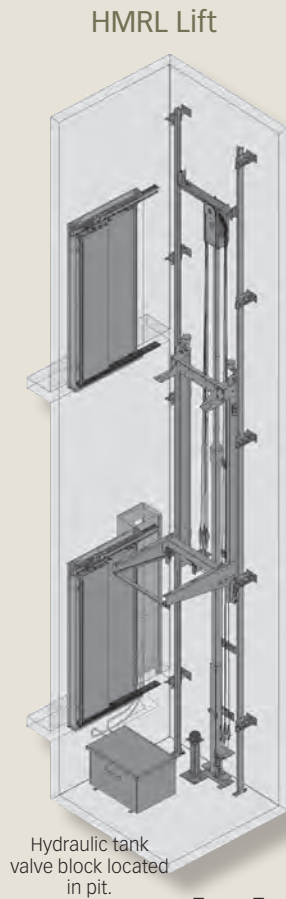
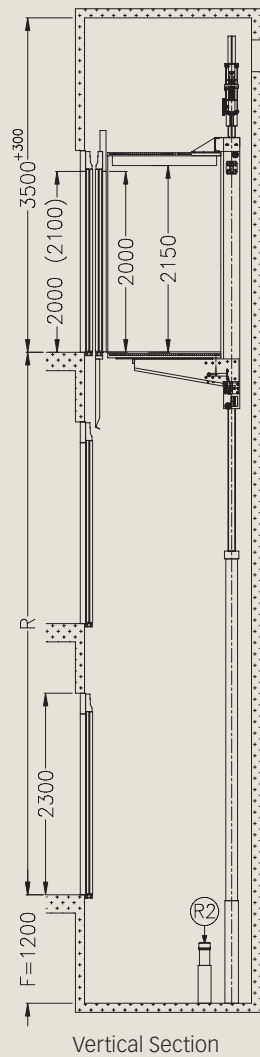
Conforms to:  
UL 508A  
ASME A.17.5 y A.17.1  
Nr. File: E331304



TYPE AMEC	CAPACITY		PERS.	CAR SIZE Ax B mm. ft	SHAFT SIZE Cx D mm. ft	DOORS mm. ft	REACTION LOADS (KN)				SPEED	
	kg.	lbs					R1	R2	R3	R4	m/s	fpm
1310	1000	2000	13	1730 X 1300 68" X 51"	2580 X 1650 8'7" X 5'5"	914 3'0"	23	80	20	60	1.00	200
1317											1.75	350
1325											2.50	500
1610	1250	2500	16	1730 X 1525 68" X 60"	2580 X 1875 8'7" X 6'3"	1067 3'6"	39	110	27	82	1.00	200
1617											1.75	350
1625											2.50	500
2010	1500	3000	20	2100 X 1525 82" X 60"	2950 X 1875 9'10" X 6'3"	1067 3'6"	45	130	33	97	1.00	200
2017											1.75	350
2025											2.50	500
2310	1750	3500	23	2100 X 1650 82" X 66"	2950 X 2000 9'10" X 6'8"	1067 3'6"	48	140	36	104	1.00	200
2317											1.75	350
2325											2.50	500
2610	2000	4000	26	2100 X 1850 82" X 73"	2950 X 2200 9'10" X 7'4"	1219 4'0"	52	150	38	112	1.00	200
2617											1.75	350
2625											2.50	500

- For Double Entrance (180°) add 200mm on the depth.

**HA** HYDRAULIC LIFTS WITH MOTOR ROOM  
**HMRL** HYDRAULIC MOTOR ROOMLESS LIFT  
**HCAM** HYDRAULIC STRETCHER LIFT



Types Test Certificated **EN 81.2**



Hydraulic System by MORIS

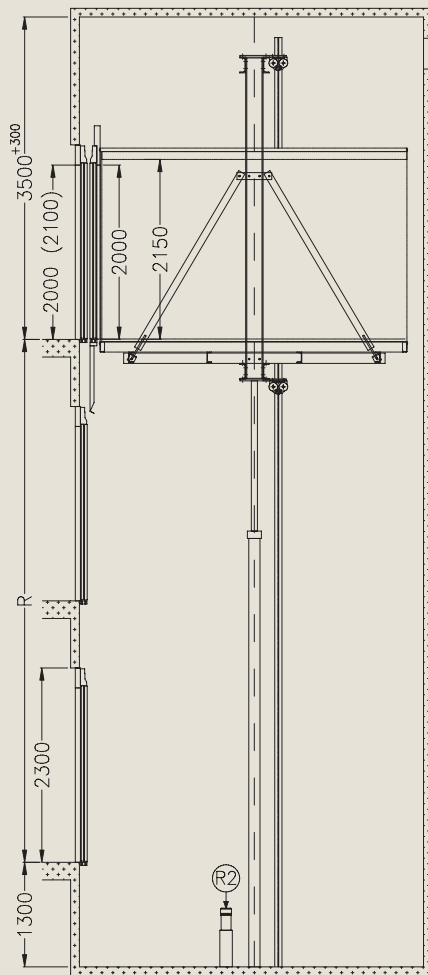
- Minimal lateral guide loads.
- Single Hydraulic Piston.
- Direct Acting or 2:1.
- High Quality MORIS Hydraulics.
- Option for Oil Cooler.
- Suitable for 2 to 5 Floors.

	SPEED m/s	TYPE	LOAD kg.	PERSON	CAR SIZE AxB mm.	SHAFT SIZE CxD mm.	DOORS mm.	REACTION LOADS (KN)		
								R1	R2	R3
HA	0,60	4060	320	4	900 X 1000	1300 X 1300	700	1.5	37	15
		6060	450	6	1000 X 1250	1400 X 1550	800	2.5	48	18
		8060	630	8	1100 X 1400	1550 X 1700	800/900	3.6	60	23
	0,50	10050	800	10	1300 X 1400	1750 X 1750	900	4.4	75	29
		13050	1000	13	1400 X 1600	1850 X 1950	900	5.5	90	33
		16050	1200	16	1500 X 1750	1950 X 2100	1000	8.2	110	41
HMRL	0,60	8060	630	8	1100 X 1400	1550 X 1700	800/900	3.6	60	23
		13060	1000	13	1400 X 1600	1850 X 1950	900	5.5	90	33
HCAM	0,40	13040	1000	13	1100 X 2200	1600 X 2550	900	8	100	41

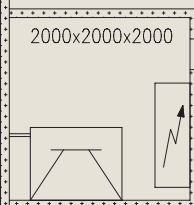


## MC HOSPITAL BED LIFTS

### BED LIFTS FROM 13 TO 26 PERSONS

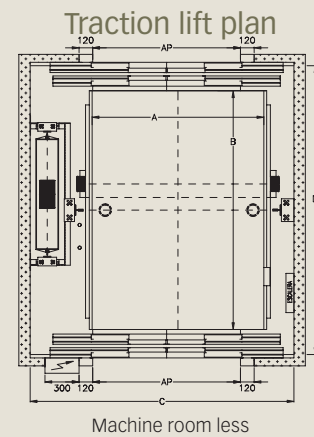
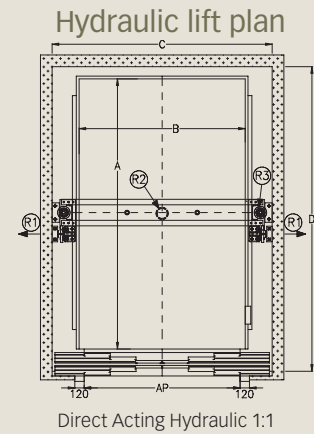
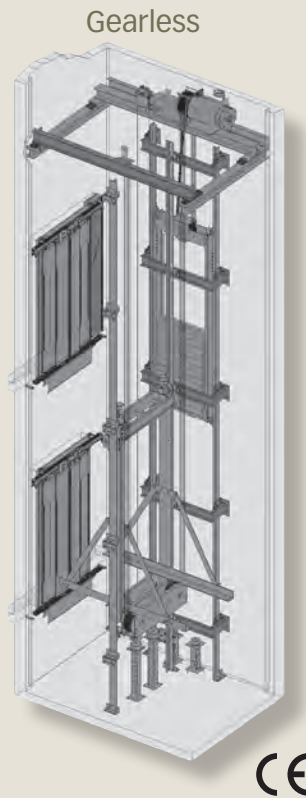


Vertical Section



#### Two Options

- **HYDRAULIC**  
Slower Speed, Low Rise, Telescopic Pistons.
- **ELECTRIC TRACTION**  
Higher Speed, High Rise Better Energy Consumption, MRL Technology.



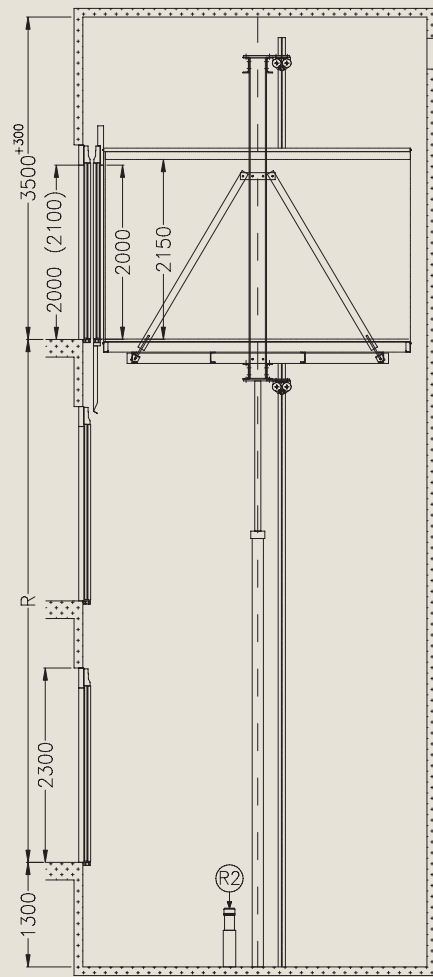
### RECOMMENDATIONS

- Traction, Load 1000 to 2000kgs V = 1 m/s
- Floors 2 to 20, Travel = 60m
- Hydraulic Load, 1000 to 2000 kgs V = 0.4 m/s
- Floors 2 to 4, Travel = 10 m

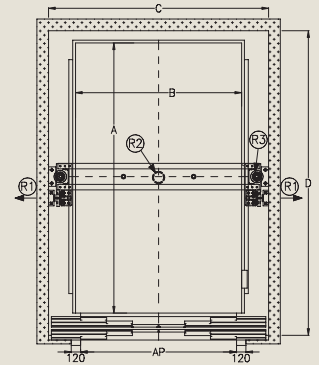
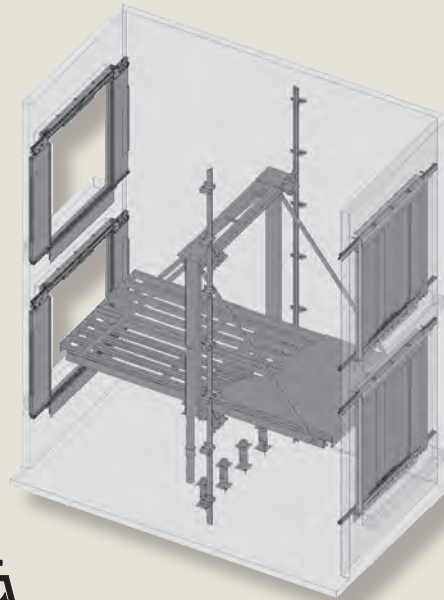
	SPEED m/s	TYPE	LOAD kg.	PERSON	CAR SIZE AxB mm.	SHAFT SIZE CxD mm.	DOOR SIZE mm.	REACTION LOADS (kN)			
								R1	R2	R3	R4
TRACTION LIFT VVF	1,00	E1310	1000	13	1100 X 2200	1650 X 2500	900	23	80	20	60
		E1610	1200	16	1200 X 2200	2050 X 2500	1100	39	110	27	82
		E2010	1500	20	1400 X 2200	2250 X 2500	1200	45	130	33	97
		E2610	2000	26	1500 X 2700	2350 X 3000	1300	52	150	38	112
HYDRAULIC	0,4 ( $\lambda / \Delta$ )	H13040	1000	13	1100 X 2200	1650 X 2500	900	8	100	4	--
		H16040	1200	16	1200 X 2200	2050 X 2500	1100	8	110	6	--
		H20040	1500	20	1400 X 2200	2250 X 2500	1200	10	130	8	--
		H26040	2000	26	1500 X 2700	2350 X 3000	1300	12	150	8	--

- For Double Entrance (180°) add 200mm on the depth.

## HM HYDRAULIC LARGE GOODS LIFTS/CAR LIFTS

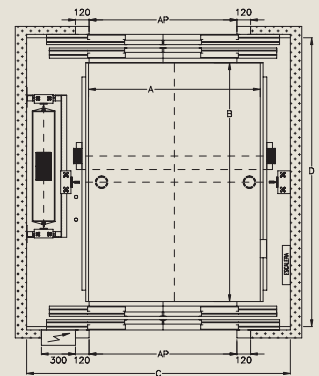


Vertical Section



Plan

EN 81.2 Certificate



Telescopic piston



- Twin Hydraulic Pistons
- No Cables
- Hydraulic Safety Rupture Valve CE Certified.
- Loads of 3000kg to 4000kg with 4 car guides.
- Provision for 10 metre travel, 4 floors.
- Internationally renowned MORIS Hydraulics.
- Automatic 6 panel Doors.
- Doors: 200 mm, 2100mm or 2200mm High.
- Option for motor roomless configuration.

MOTOR CV	CURRENT (A)	
	In	Ia
10	19	29
13	23	35
16	29	44
20	37	56
25	44	66
30	52	78
40	68	102

TYPE	LOAD kg.	CAR SIZE AxB mm.	SHAFT SIZE CxD mm.	DOOR SIZE AP mm.	SPEED m/s	POWER HP	SPEED m/s	POWER HP	HYDRAULIC PISTON	REACTION LOADS (kN)		
ETM										R1	R2	R3
HM20	2000	2400 X 5100	3100 X 5400	2200	0,12	10	0,24	20	70/90	10	180	40
HM25	2500	2400 X 5100	3100 X 5400	2200		13		25	75/100	12	200	50
HM30	3000	2500 X 5300	3200 X 5600	2300		16		30	90/114	15	240	60
HM40	4000	2500 X 5300	3200 X 5600	2300		20		40	90/114	20	320	80


- For double entrance add extra 250mm to Depth of Shaft.



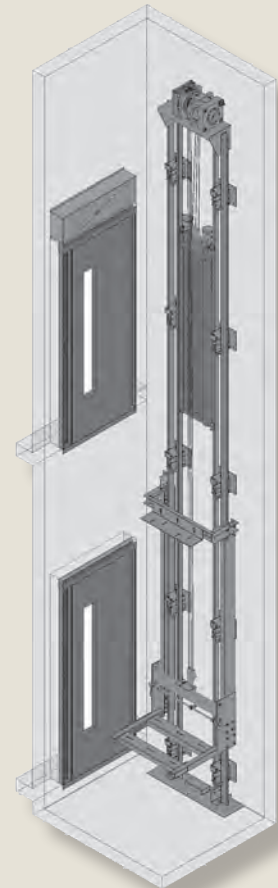
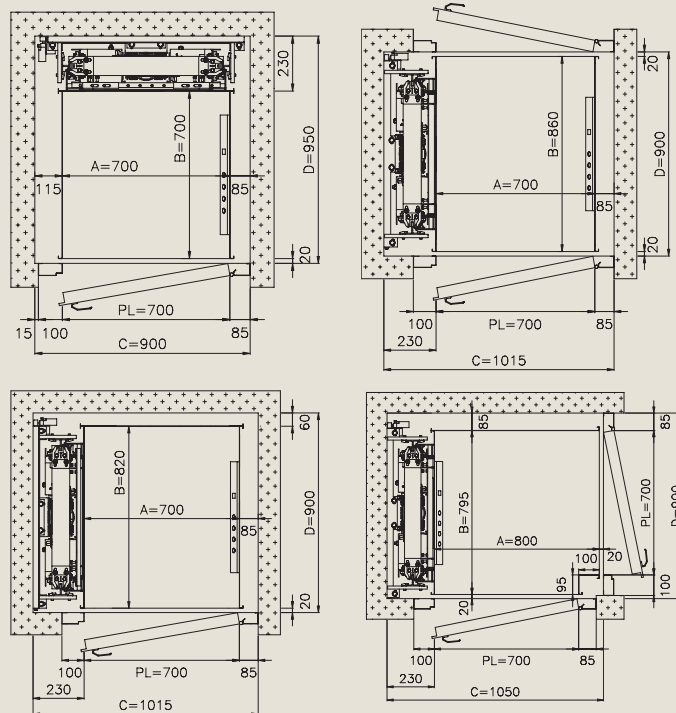
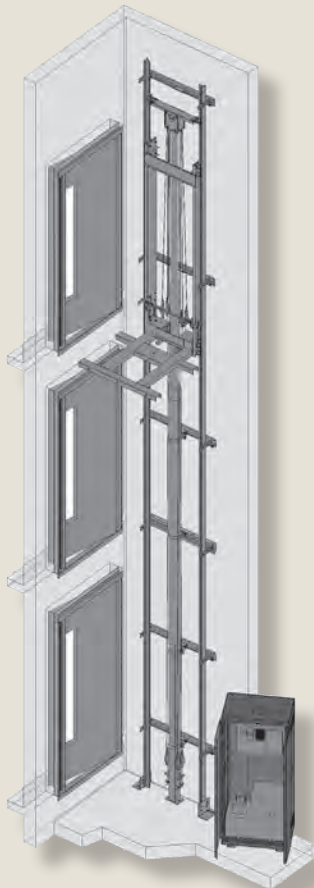
# RH / RG HOMELIFT

## HYDRAULIC TYPE

## VERTICAL LIFTING PLATFORM FOR USE BY PERSON WITH IMPAIRED MOVILITY

European Standard **EN81-41** 

## GEARLESS SYSTEM - ECORESILIFT



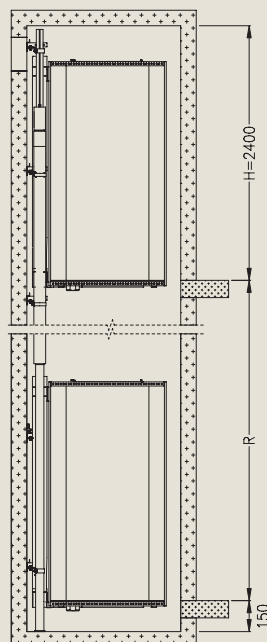
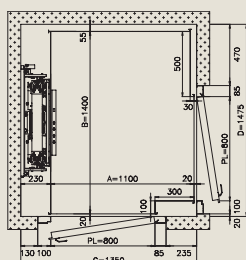
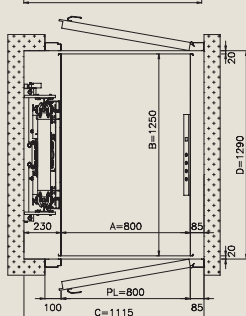
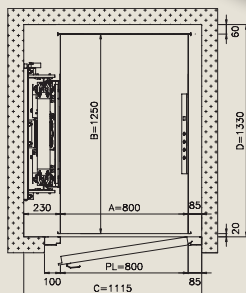
## MODELS

### MODELS RH225 and RG 225

(225kgs – 3 person Hydraulic Model Single Phase 240 Volts, 1.5 kw  
RH for 5 floors up to 12 metre travel able to fit into a very small space.

### MRL

Traction model single phase gearless 220v motor capable of up to 8 floors with a 20 metre travel. No space needed for lift motor room.



- For both new and existing private buildings.
- For use by persons with impaired mobility.
- In public buildings for restricted use.

## MAIN CHARACTERISTICS

- Speed 0,15 m/s
- Roping: hydraulic 2:1 and electric 1:1
- Soft operation and low noise level
- Single-phase. Low energy consumption
- Reduced pit, only 150 mm. Headroom of 2400mm.
- Instantaneous safety gear in car frame
- Skinplate SKY model car with timed light
- Installed in metallic structure



TYPE	LOAD	CAR SIZE	ACCESS			SHAFT SIZE	DOOR SIZE
RG-RH	kg.	AxB mm.	ONE	TWO	TWO 90°	C X D (mm)	PL
250	250	800 x 1250	X	X	---	1115 X 1330	800
315	315	900 X 1400	X	X	---	1190 X 1480	800
385	385	1100 X 1400	X	X	X	1390 X 1480	800

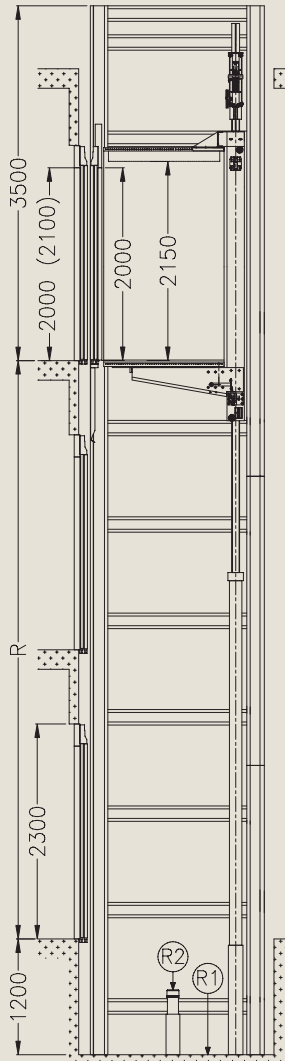
## REGULATIONS

- Machinery directive 98/37/ce.
- Pr EN8-41.
- Certificated.



Mini Electric Gearless Motor 0.5 ÷ 1kw.

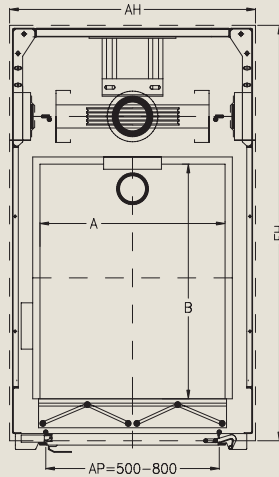
Lift with metallic structure



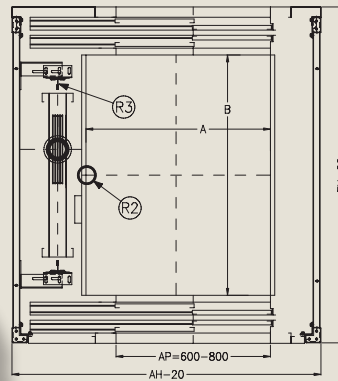
Gearless Machine up to 3kw.

- Lift can be installed in its own structure
- Designed to suit each individual building
- Uses maximum shaft space available
- Different design options for cabin and landing doors
- Reduced installation times

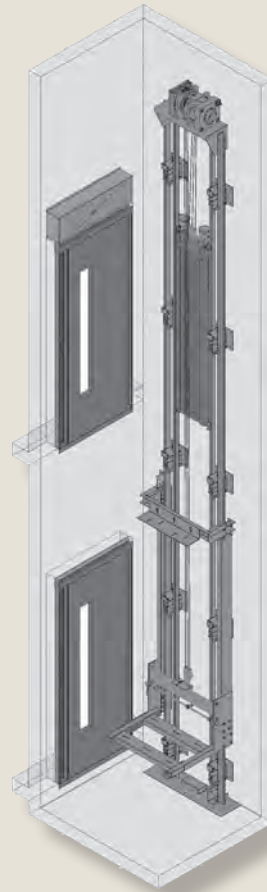
(H) HYDRAULIC STRUCTURE, door and car



Arrangement showing structure with automatic doors.



(E) TRACTION  
Gearless machine  
with low energy  
consumption



### Machine and Control Panel

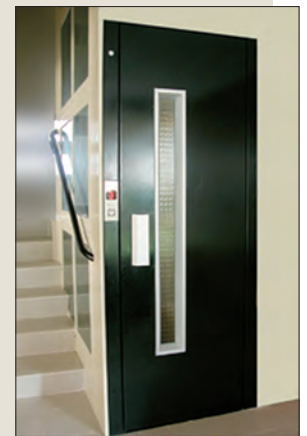
HYDRAULIC: Cabinet located at ground floor 0.9w x 0.4d x 2.1h

ELECTRIC TRACTION: Control cabinet at top floor served 0.7w x 0.7h x 0.3d.

### SPECIFICATIONS

- Speed 0,6 m/s
- Roping: 2:1 hydraulic and 1:1 traction
- Soft operation and silent
- Instaneous safety gear in car frame.
- Capacity from 3 to 6 people

TYPE		LOAD kg	PERSON	AREA m <sup>2</sup>	MOTOR kw
3060	H	225	3	0,6	6
	EG				1.3
4060	H	300	4	0,8	7.5
	EG				1.7
5060	H	375	5	1	9.5
	EG				2.2
6060	H	450	6	1,2	9.5
	EG				2.6



Stair shaft



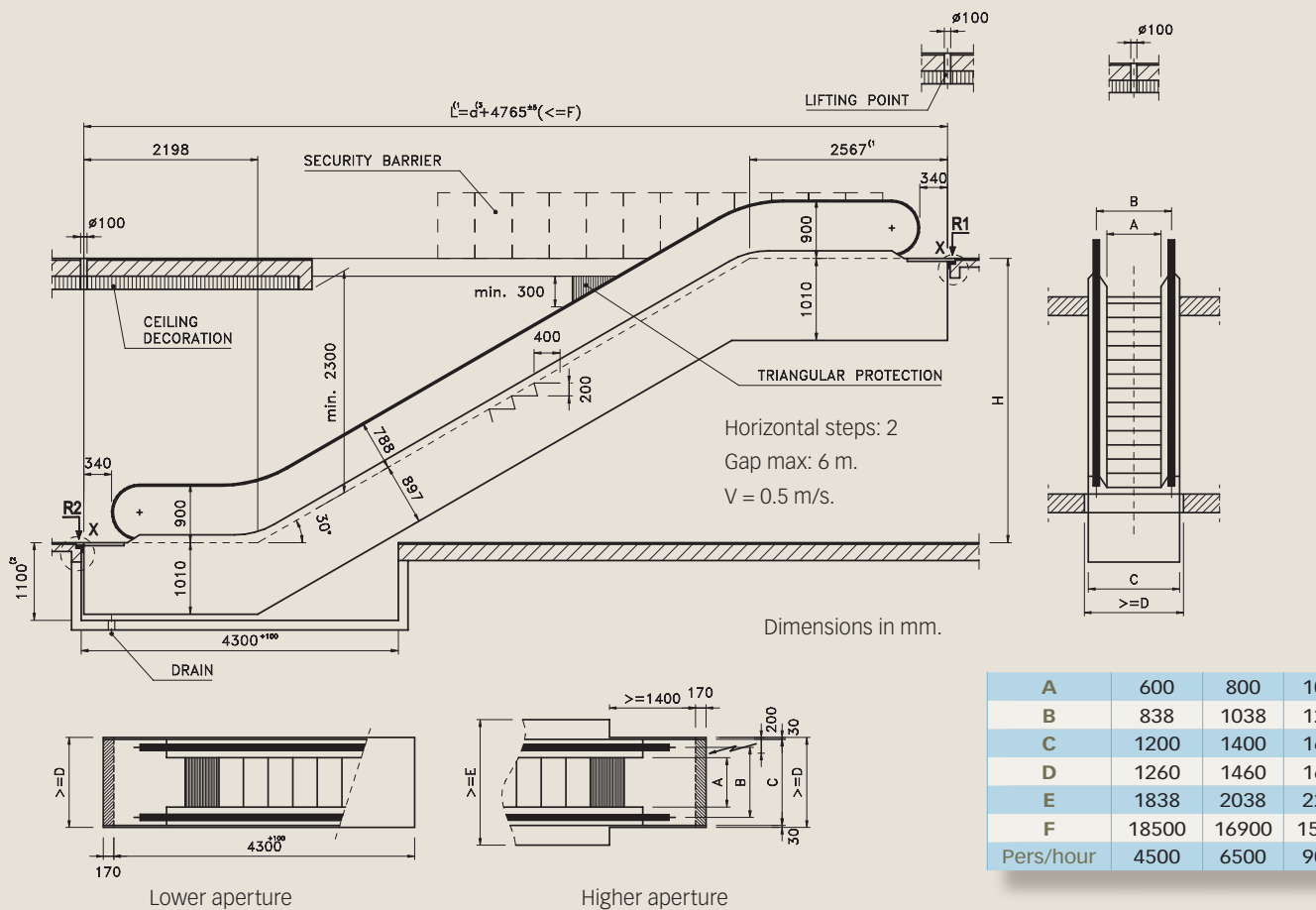


# ESCALATOR

DESIGN FOR ESCALATOR 30°

S30N

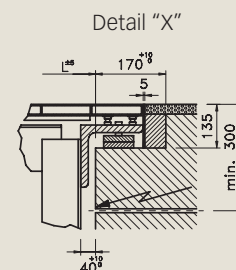
600  
800  
1000



- 1)- Increase 417 mm. when the step is 600 mm.
- 2)- 1300 for escalator exterior.
- 3)- a=Hx1.73205

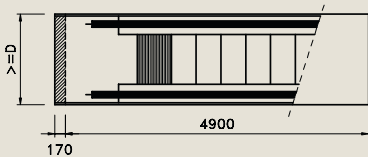
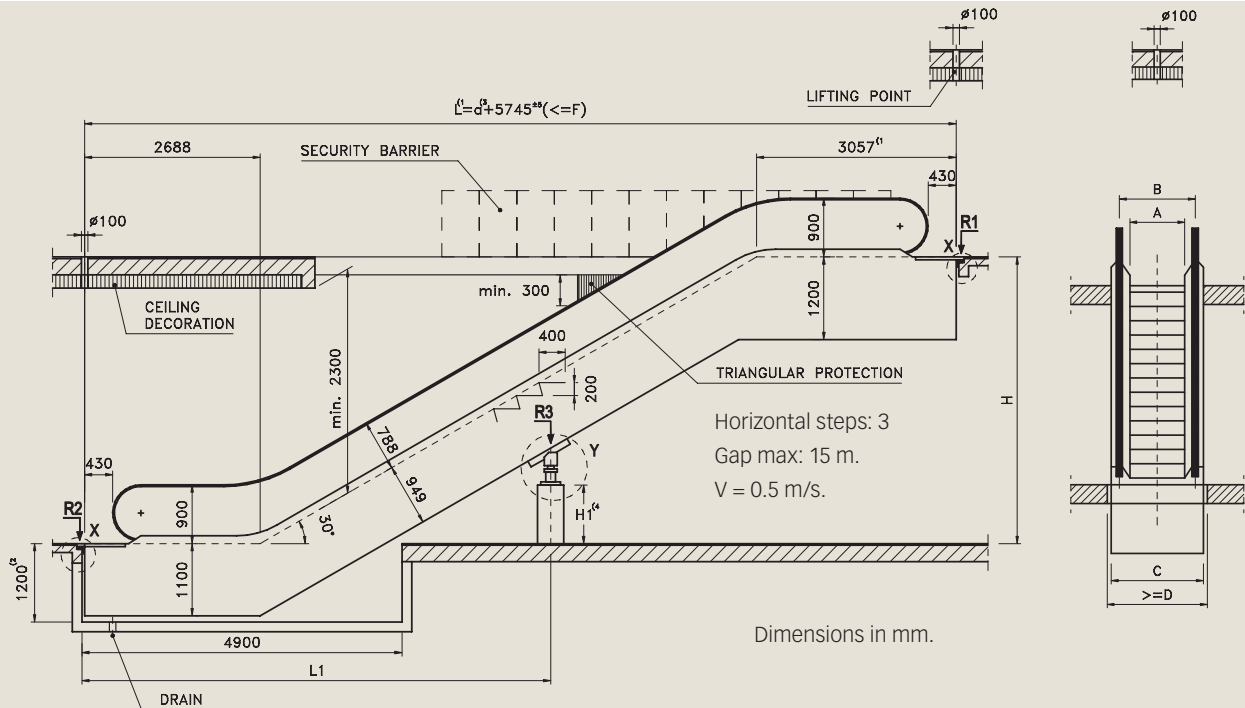
Step Width	Gap	Length	Weight	Weight on Supports		P motor	Transport Dimensions	
A mm	H mm	L mm	KN	R1 KN	R2 KN	KV v=0.5 m/s	h	I
600	3000	9955	57	46	41	5.5	2750	10900
	3500	10821	60	49	44	5.5	2780	11890
	4000	11687	64	52	47	5.5	2810	12880
	4500	12553	68	56	50	5.5	2830	13870
	5000	13419	71	59	53	5.5	2840	14860
	5500	14285	75	62	56	5.5	2860	15860
	6000	15151	79	65	59	8	2870	16850
800	3000	9955	59	52	47	5.5	2750	10900
	3500	10821	63	56	50	5.5	2780	11890
	4000	11687	67	60	54	5.5	2810	12880
	4500	12553	71	64	57	8	2830	13870
	5000	13419	74	68	60	8	2840	14860
	5500	14285	82	74	66	8	2860	15850
	6000	15151	86	78	69	8	2870	16860
1000	3000	9955	63	59	53	5.5	2750	10900
	3500	10821	67	64	57	8	2780	11890
	4000	11687	71	68	61	8	2810	12880
	4500	12553	75	73	65	8	2830	13870
	5000	13419	83	79	71	11	2840	14860
	5500	14285	87	84	75	11	2860	15850
	6000	15151	92	88	79	11	2870	16860

Please check for non standard dimensions

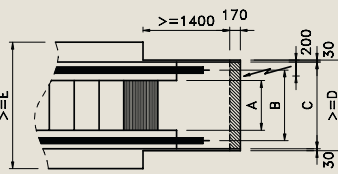


# ESCALATOR 30°

DESIGN FOR ESCALATOR 30° **S30H** 1000



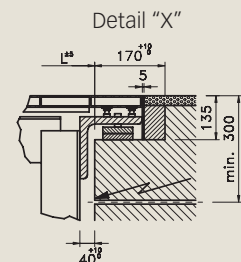
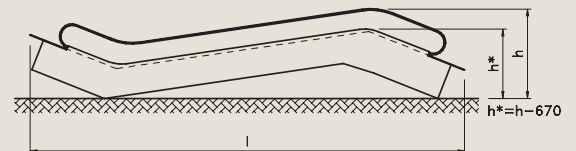
Lower aperture



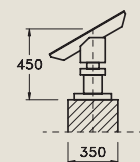
Higher aperture

A	600	800	1000
B	838	1038	1238
C	1200	1400	1600
D	1260	1460	1660
E	1838	2038	2238
F	18500	16900	15700
Pers/hour	4500	6500	9000

- 1)- Increase 417 mm. when the step is 600 mm.
- 2)- 1300 for escalator exterior.
- 3)-  $a = H \times 1.73205$
- 4)-  $H1 = 0.57735 \times (L1 - 2688) - 1546$



Detail "Y"



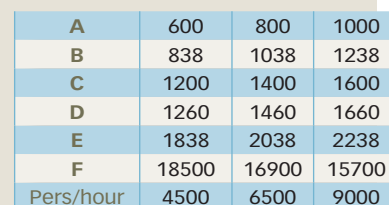
Step Width	Gap	Length	Weight	Weight on Supports			P motor	Transport Dimensions	
A	H	L	KN	R1	R2	R3	KV	h	l
mm	mm	mm		KN	KN	KN	v=0.5 m/s		
1000	4000	12673	80	76	69	-	8	3130	13780
	5000	14405	88	83	76	-	8	3138	15760
	6000	16137	100	58	49	95	11		
	7000	17869	109	62	53	104	11		
	8000	19601	118	66	57	113	15		
	9000	21333	127	71	62	122	15		
	10000	23065	136	75	66	131	2x11		
	11000	24797	145	79	70	140	2x11		

Please check for non standard dimensions



## DESIGN FOR ESCALATOR 35°

**\$35** 600  
800  
1000

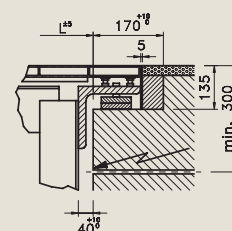


Step Width	Gap	Length	Weight	Weight on Supports		P motor	Transport Dimensions	
A mm	H mm	L mm	KN	R1 KN	R2 KN	KV v=0.5 m/s	h	l
600	3000	9162	54	43	39	5.5	2850	10180
	3500	9877	57	46	41	5.5	2890	11030
	4000	10591	60	49	44	5.5	2920	11890
	4500	11305	64	52	46	5.5	2940	12750
	5000	12019	67	54	49	5.5	2970	13610
	5500	12733	70	57	51	5.5	2980	14470
	6000	13447	73	60	54	5.5	3000	15330
800	3000	9162	56	49	44	5.5	2850	10180
	3500	9877	60	52	47	5.5	2890	11030
	4000	10591	63	56	50	5.5	2920	11890
	4500	11305	66	59	53	5.5	2940	12750
	5000	12019	70	62	56	8	2970	13610
	5500	12733	73	65	59	8	2980	14470
	6000	13447	76	69	61	8	3000	15330
1000	3000	9162	60	56	50	5.5	2850	10180
	3500	9877	64	60	53	5.5	2890	11030
	4000	10591	67	64	57	8	2920	11890
	4500	11305	71	67	60	8	2940	12750
	5000	12019	74	71	64	8	2970	13610
	5500	12733	82	77	69	11	2980	14470
	6000	13447	85	81	72	11	3000	15330

Please check for non standard dimensions

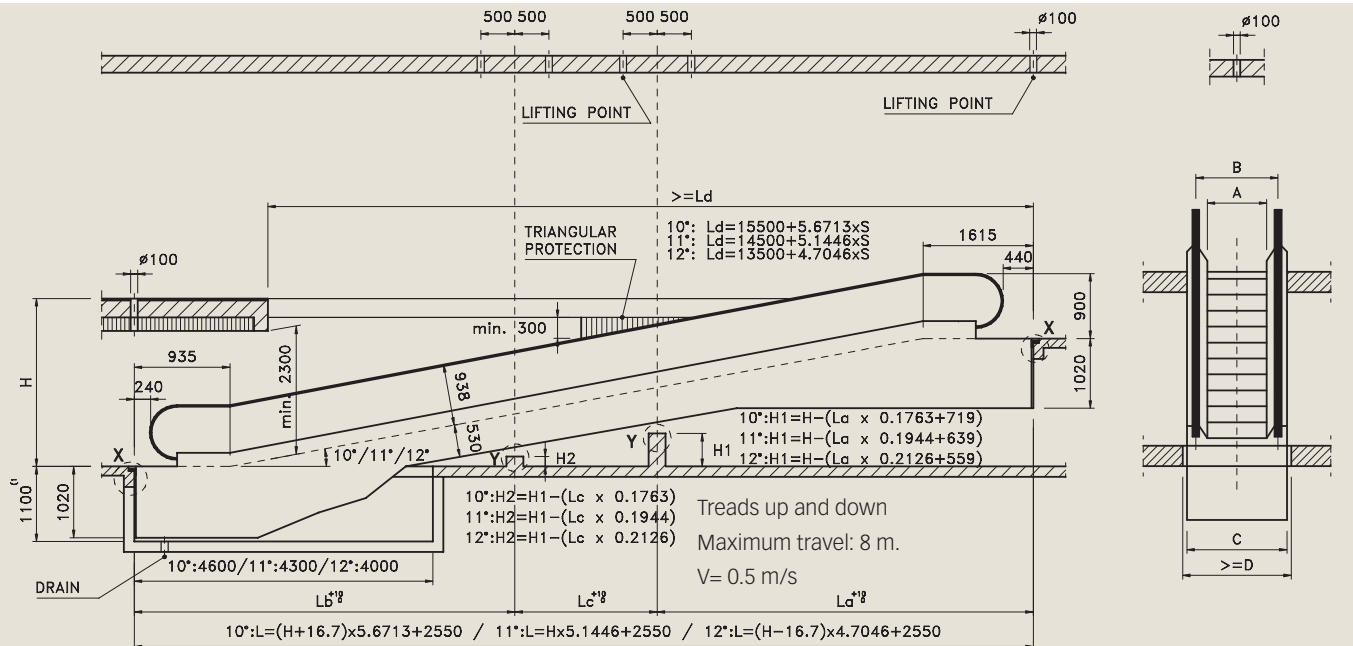


Detail "X"



# INCLINED MOTORISED WALKWAY

INCLINED MOTORISED WALKWAY **S50** 800 1000



1)- 1300 for escalator exterior

Parameters for calculating loads	q	M	N
800	0.0039	9.5	4.5
1000	0.0045	11	5

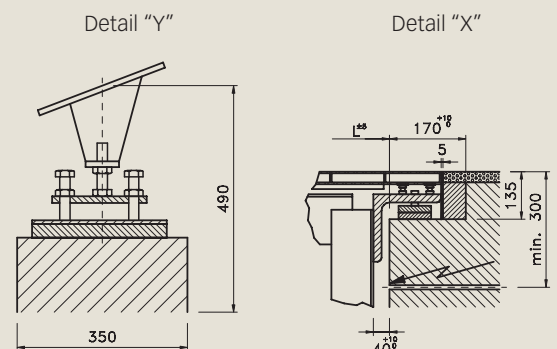
Incline	TRAVEL		INTERMEDIATE LOADS		La	Lb	Lc
	From mm.	To mm.	R3	R4			
10°	1263	1792	-	-	-	-	-
	1793	4437	1	-	L/2	L/2	-
	4438	6000	1	1	L/3	L/3	L/3
11°	1393	1975	-	-	-	-	-
	1976	4891	1	-	L/2	L/2	-
	4892	6000	1	1	L/3	L/3	L/3
12°	1523	2160	-	-	-	-	-
	2161	5349	1	-	L/2	L/2	-
	5350	6000	1	1	L/3	L/3	L/3

LOADS ON SUPPORTS		
With no support	With one support	With two supports
R1=L x q+M	R1=La x q+M	R1=La x q+M
	R2=Lb x q+N	R2=Lb x q+N
R2=L x q+N	R3=(La + Lb) x 1.3 x q	R3=(La + Lc) x 1.3 x q
		R4=(Lb + Lc) x 1.3 x q



A	800	1000
B	1038	1238
C	1400	1600
D	1460	1660
E	2038	2238
F	1400	1600
Pers/hour	6500	9000

Check for non standard dimensions.

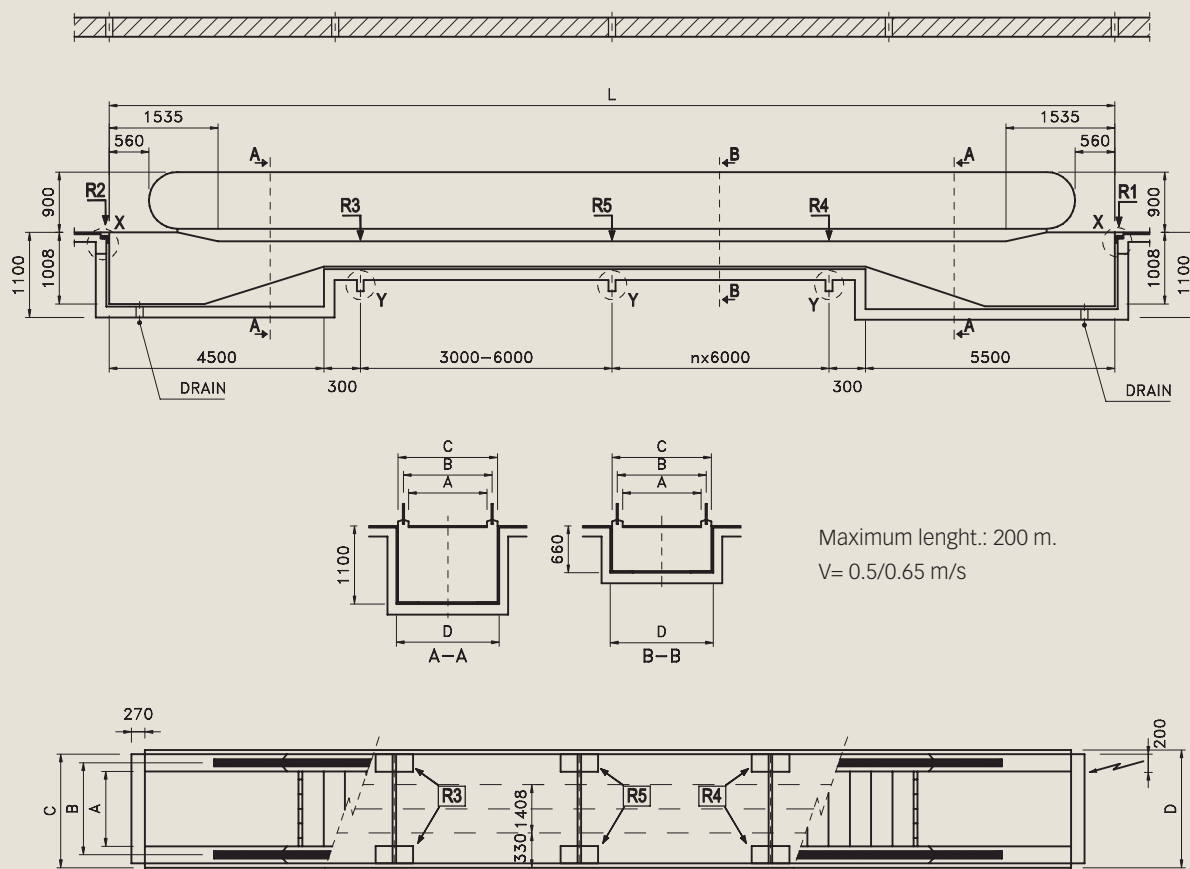




# MECHANICAL WALKWAY

MECHANICAL WALKWAY (TRAVELATOR)

**S60** 800  
1000  
1400



Dimensions in mm.

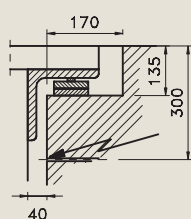
A	800	1000	1400
B	1037	1237	1645
C	1400	1600	2000
D	1460	1660	2060
Pers./hour	6500	9000	12500

Check for non standard dimensions.

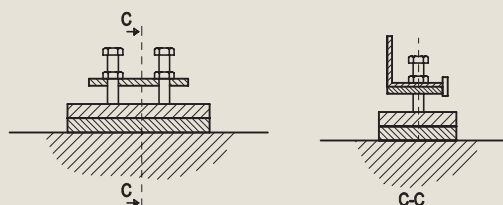
Platform width	Weight on supports				
A mm	R1 KN	R2 KN	R3 KN	R4 KN	R5 KN
800	45	31	30	32	44
1000	49	33	32	34	53
1200	55	38	35	38	66



Detail "X"



Detail "Y"



OMEGA ELEVATOR, S.A. manufacturing plant and head offices with total area of 9000 m<sup>2</sup>

**OMEGA**



#### World wide

- Argeli, Argentina, Saudia.
- Brasil, Bolívia.
- Colombia, Chile.
- Denmark.
- Spain, Egypt.
- France.
- Canary, G.B., Ireland.
- Lybia.
- Morocco.
- Peru, Panama, Poland, Portugal, Puerto Rico.
- Qatar.
- Dominican Republic, Rumania.
- Sweden.
- UAE.
- Venezuela.



## Omega Elevator

Polígono Industrial de Júndiz  
C/ Júndiz, 29  
01015 VITORIA-GASTEIZ (Spain)  
Apdo. Correos 5043 (C.P. 01080)  
Tfns: 945 290 308 • Fax: 945 290 496  
[omegaelevator@omegaelevator.com](mailto:omegaelevator@omegaelevator.com)  
[www.omegaelevator.com](http://www.omegaelevator.com)